

# **Cavco McKenzie Series Park Models**

*Elegant and functional floor plans loaded with luxury standard features.*

**Future Homes of Bremerton (360) 479-4663**

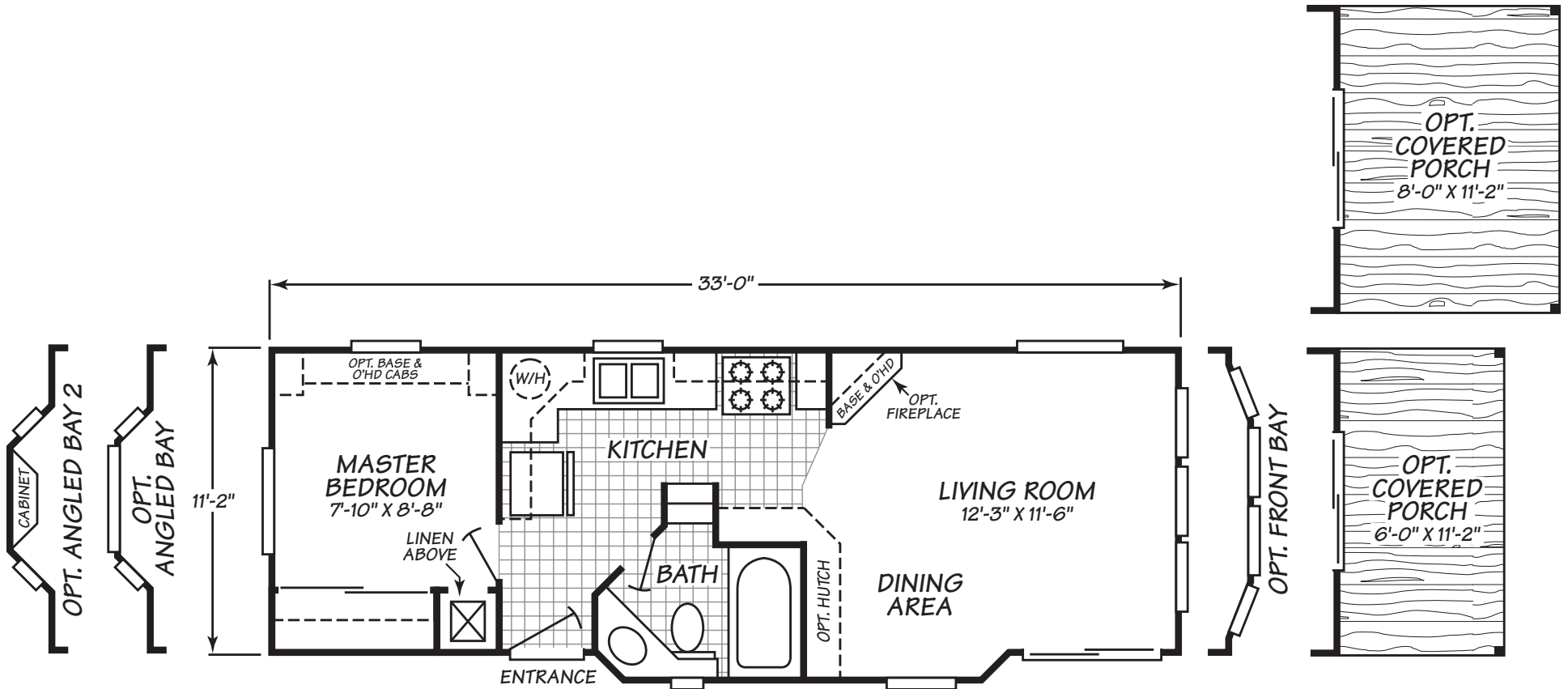


**Seven Floor Plans and Standard Features List below**



# McKenzie Series Model 1331N

1 Bedroom • 1 Bath • 382 Square Feet

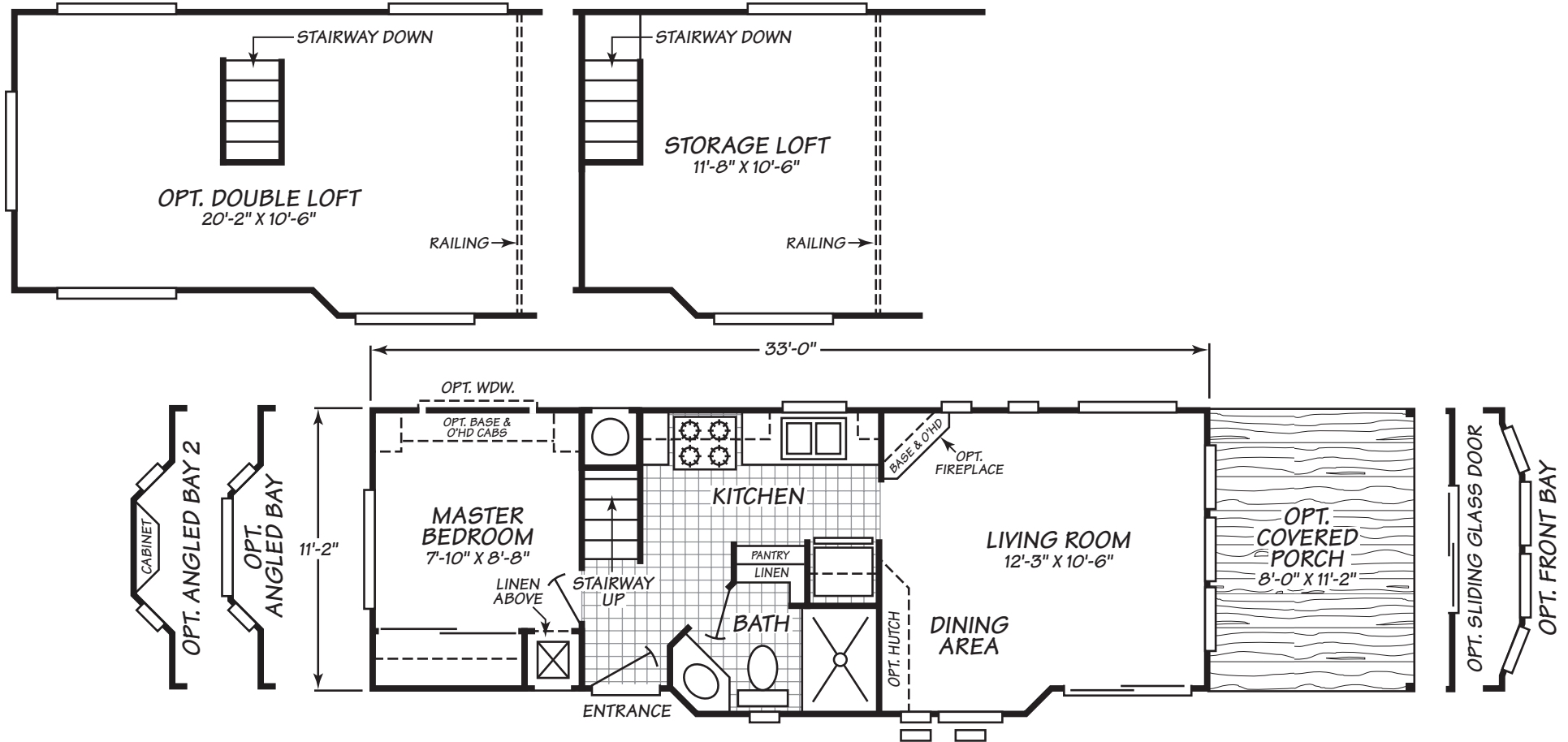


Fleetwood Homes reserves the right to change colors, prices, specifications, models, dimensions and materials without notice. Rendering and diagrams are meant to be representative and, in keeping with Fleetwood's policy of constant updating and improvement, may vary from the actual home. All dimensions are nominal and approximated. Square footage is measured from exterior wall to exterior wall, and is an approximate figure. Length indicated in floorplans is floor length only. The length of the hitch is not included. (Add four feet to arrive at transportable length.) Ask your retailer for specifics. PRICES AND SPECIFICATIONS SUBJECT TO CHANGE WITHOUT NOTICE OR OBLIGATION.



# McKenzie Series Model 1331O

1 Bedroom • 1 Bath • 382 Square Feet

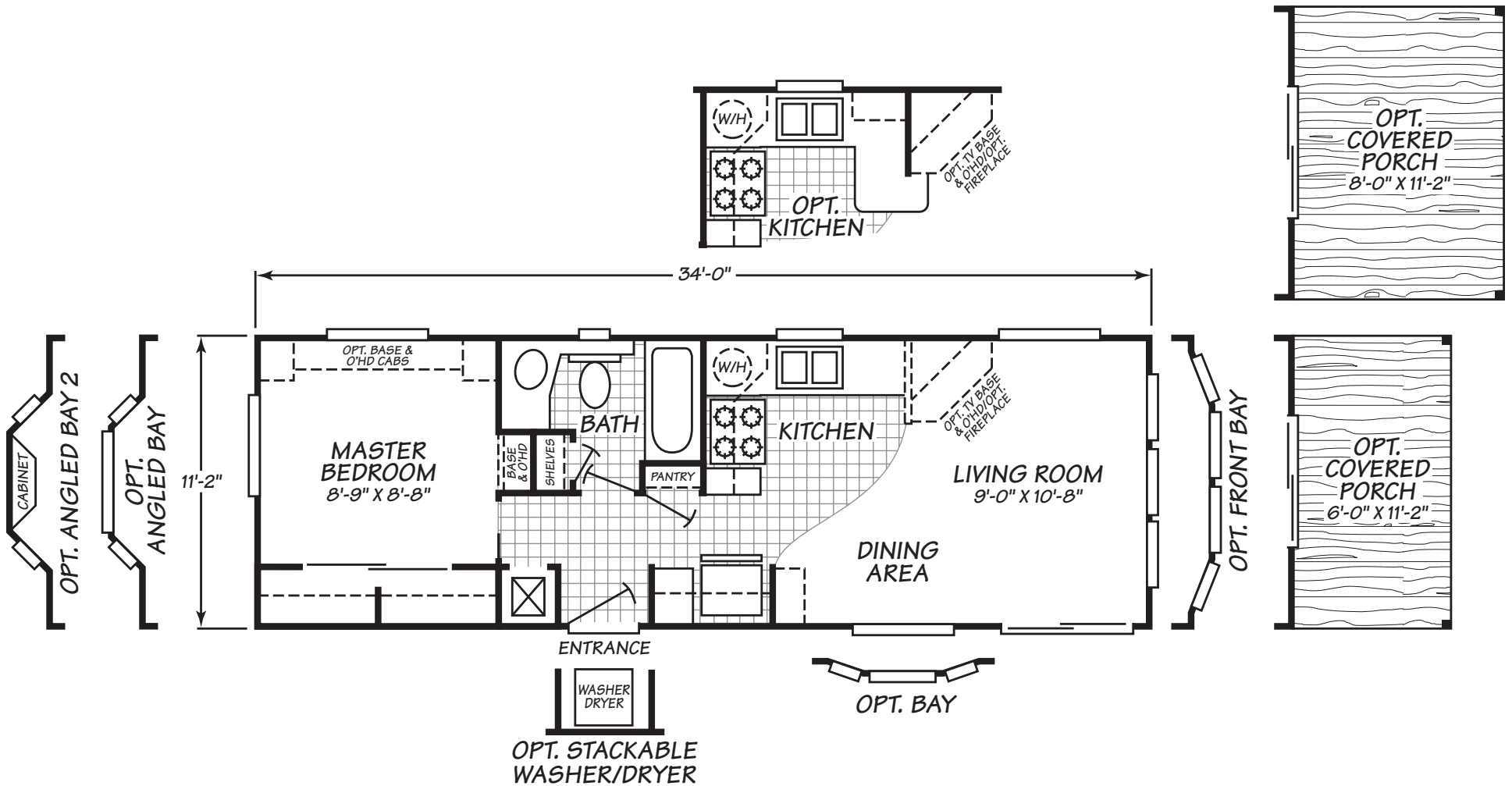


Fleetwood Homes reserves the right to change colors, prices, specifications, models, dimensions and materials without notice. Rendering and diagrams are meant to be representative and, in keeping with Fleetwood's policy of constant updating and improvement, may vary from the actual home. All dimensions are nominal and approximated. Square footage is measured from exterior wall to exterior wall, and is an approximate figure. Length indicated in floorplans is floor length only. The length of the hitch is not included. (Add four feet to arrive at transportable length.) Ask your retailer for specifics. PRICES AND SPECIFICATIONS SUBJECT TO CHANGE WITHOUT NOTICE OR OBLIGATION.



# McKenzie Series Model 13411

1 Bedroom • 1 Bath • 379 Square Feet

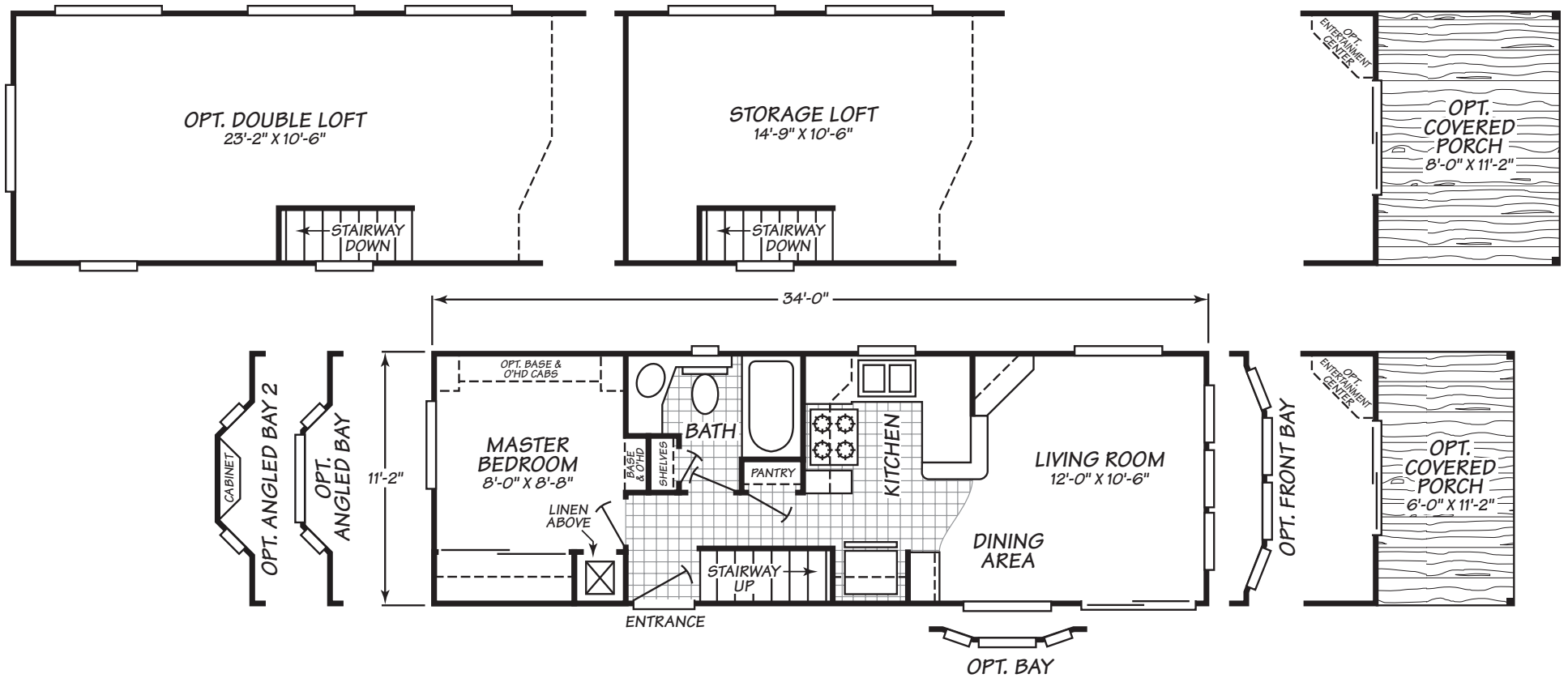


Fleetwood Homes reserves the right to change colors, prices, specifications, models, dimensions and materials without notice. Rendering and diagrams are meant to be representative and, in keeping with Fleetwood's policy of constant updating and improvement, may vary from the actual home. All dimensions are nominal and approximated. Square footage is measured from exterior wall to exterior wall, and is an approximate figure. Length indicated in floorplans is floor length only. The length of the hitch is not included. (Add four feet to arrive at transportable length.) Ask your retailer for specifics. PRICES AND SPECIFICATIONS SUBJECT TO CHANGE WITHOUT NOTICE OR OBLIGATION.



# McKenzie Series Model 1341K

1 Bedroom • 1 Bath • 379 Square Feet

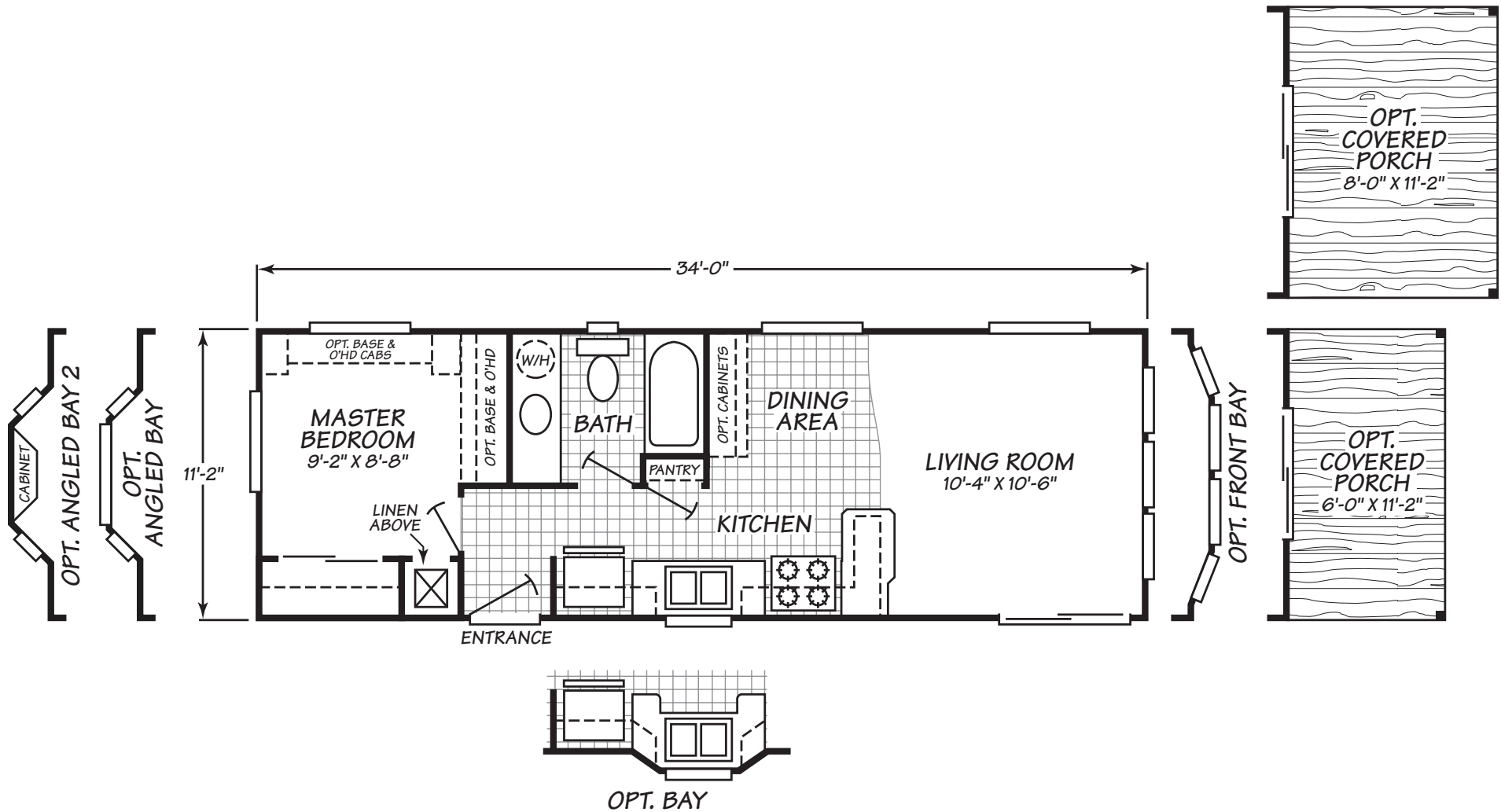


Fleetwood Homes reserves the right to change colors, prices, specifications, models, dimensions and materials without notice. Rendering and diagrams are meant to be representative and, in keeping with Fleetwood's policy of constant updating and improvement, may vary from the actual home. All dimensions are nominal and approximated. Square footage is measured from exterior wall to exterior wall, and is an approximate figure. Length indicated in floorplans is floor length only. The length of the hitch is not included. (Add four feet to arrive at transportable length.) Ask your retailer for specifics. PRICES AND SPECIFICATIONS SUBJECT TO CHANGE WITHOUT NOTICE OR OBLIGATION.



# McKenzie Series Model 1341R

1 Bedroom • 1 Bath • 379 Square Feet

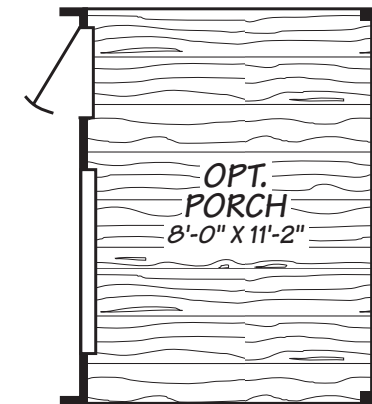
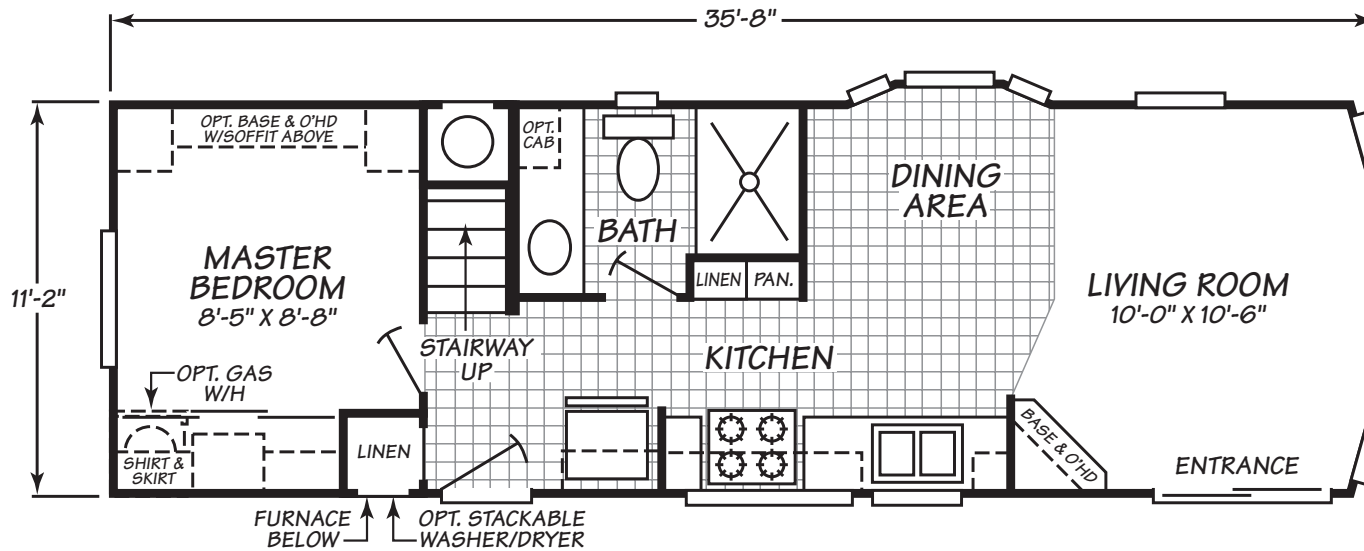
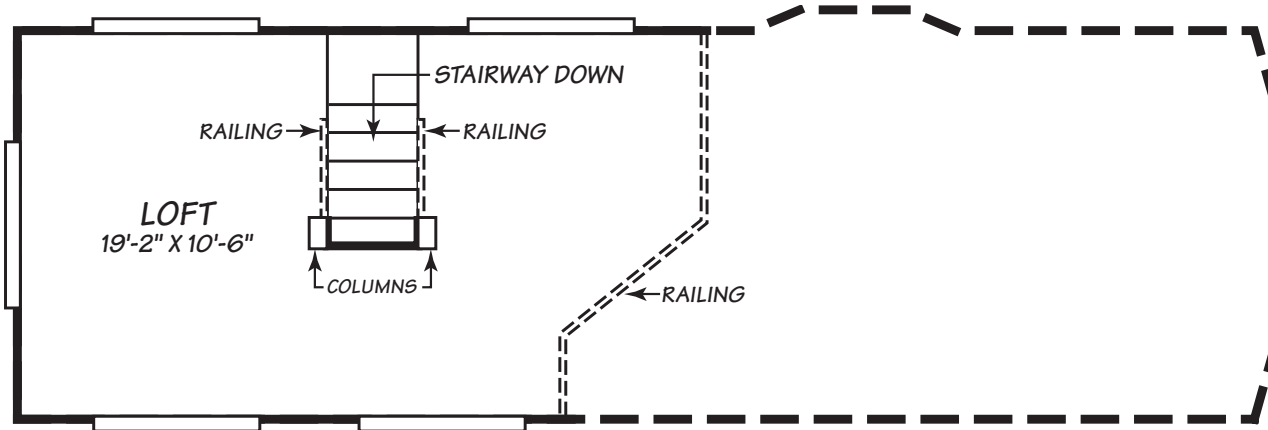


Fleetwood Homes reserves the right to change colors, prices, specifications, models, dimensions and materials without notice. Rendering and diagrams are meant to be representative and, in keeping with Fleetwood's policy of constant updating and improvement, may vary from the actual home. All dimensions are nominal and approximated. Square footage is measured from exterior wall to exterior wall, and is an approximate figure. Length indicated in floorplans is floor length only. The length of the hitch is not included. (Add four feet to arrive at transportable length.) Ask your retailer for specifics. PRICES AND SPECIFICATIONS SUBJECT TO CHANGE WITHOUT NOTICE OR OBLIGATION.



# McKenzie Series Model 1351E

1 Bedroom • 1 Bath • 390 Square Feet

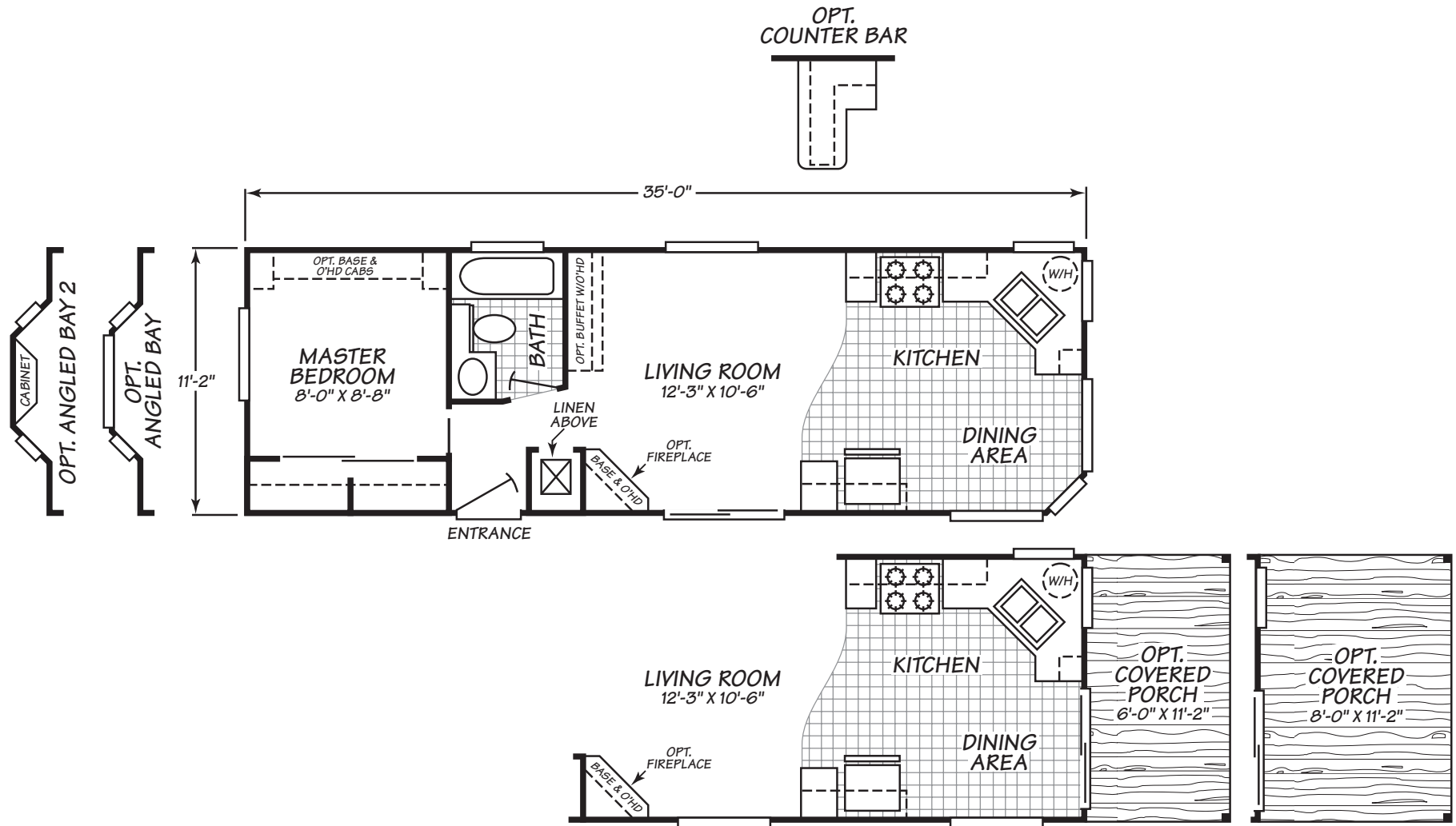


Fleetwood Homes reserves the right to change colors, prices, specifications, models, dimensions and materials without notice. Rendering and diagrams are meant to be representative and, in keeping with Fleetwood's policy of constant updating and improvement, may vary from the actual home. All dimensions are nominal and approximated. Square footage is measured from exterior wall to exterior wall, and is an approximate figure. Length indicated in floorplans is floor length only. The length of the hitch is not included. (Add four feet to arrive at transportable length.) Ask your retailer for specifics. PRICES AND SPECIFICATIONS SUBJECT TO CHANGE WITHOUT NOTICE OR OBLIGATION.



# McKenzie Series Model 1351P

1 Bedroom • 1 Bath • 389 Square Feet



Fleetwood Homes reserves the right to change colors, prices, specifications, models, dimensions and materials without notice. Rendering and diagrams are meant to be representative and, in keeping with Fleetwood's policy of constant updating and improvement, may vary from the actual home. All dimensions are nominal and approximated. Square footage is measured from exterior wall to exterior wall, and is an approximate figure. Length indicated in floorplans is floor length only. The length of the hitch is not included. (Add four feet to arrive at transportable length.) Ask your retailer for specifics. PRICES AND SPECIFICATIONS SUBJECT TO CHANGE WITHOUT NOTICE OR OBLIGATION.

# McKenzie Series Park Model Standard Features

Future Homes of Bremerton

360-479-4663

## Interior

- 1/2" tape and textured drywall interior with rounded corners throughout
- Wood cornice boxes with designer fabric treatment in the living and dining rooms. Mini blinds in bedroom and bath.
- Deluxe lighting package includes recessed can lights in the kitchen, overhead lighting in the bedroom, and a deluxe dining room chandelier.
- 100% Nylon 25 oz. carpet in the living room and bedroom (and loft if applicable).
- 6# rebond carpet pad.
- Vinyl flooring with a heavy wear layer decorates the kitchen and bath floors.
- Brushed nickel door and cabinet hardware.
- White interior doors with matching trim.
- Smoke detector.
- Fire extinguisher.

## Kitchen

- Real wood cabinet doors and face frame.
- 30" overhead cabinets with adjustable shelves.
- Crown molding on cabinets.
- Ceramic tile backsplash.
- Stainless steel sink.
- Single lever faucet with side sprayer
- Drawer bank per plan.
- 18 Cu. Ft. frost free refer.
- 30" gas range.
- Exhaust fan.

## Bathroom

- 54" fiberglass tub/shower or 48" stall shower, per plan.
- China sink.
- Brushed nickel single lever faucets.
- Pressure balanced shower valve
- Medicine cabinet with mirror.
- 4" tile backsplash.

## Bedroom

- Mirrored wardrobe doors
- Built in entertainment center.
- Switched receptacle
- Egress windows

# McKenzie Series Park Model Standard Features

## Exterior

- LP Smart Panel siding with Limited 50 year warranty.
- 30 Year GAF shingles
- Wainscot lap siding on all 4 sides (4 rows of lap).
- Energy efficient vinyl windows with low-e coating.
- 4 window front bay window.
- Porch light at all doors.
- 32" inswing rear door

## Plumbing, Electrical, Heating

- Pex hot and cold water lines.
- 40,000 BTU propane furnace.
- 20 gallon electric water heater.
- 50 amp main panel with "pigtail" cord.
- Black iron gas pipe run to front hitch end.
- Aluminum heat ducting with coordinated floor registers.
- Under sink waterline shut-off valves.
- R-22 fiberglass floor insulation.
- R-11 fiberglass sidewall insulation.
- R-30 cellulose blown ceiling insulation.

## Construction

- Full I-beam chassis construction
- 30 lb roof load
- Transverse 2" x 6" Floor Joists
- Detachable hitch from main chassis
- Woven simplex underbelly material
- 8' x 12' high density floor decking
- 2" x 4" sidewalls 16" O.C.
- Pre-engineered scissor trusses 16" O.C.
- 30 gauge steel strapping for truss to sidewall and floor to sidewall strength
- RPTIA approved
- ANSI approved