

Cavco Creekside Cabins

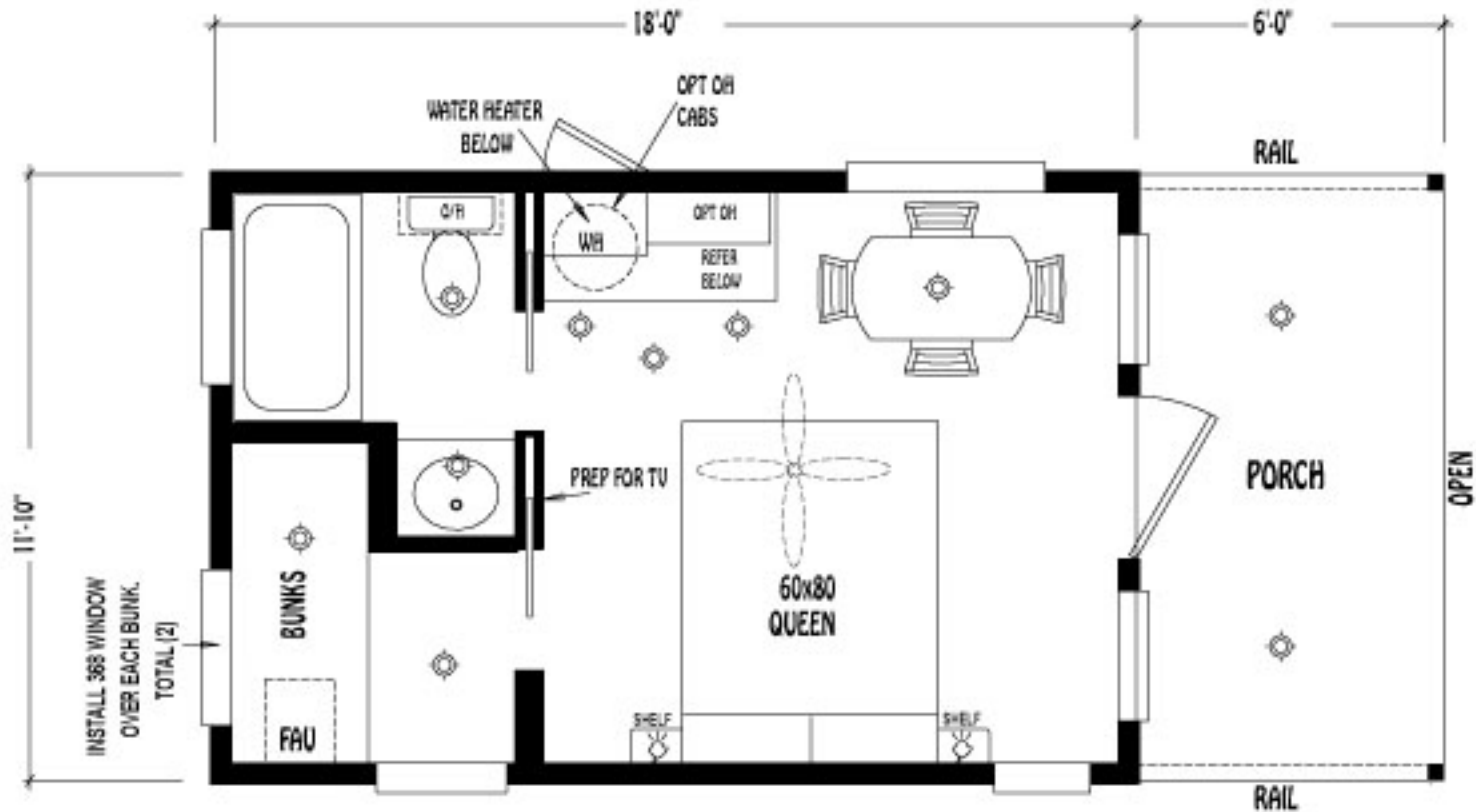
Future Homes of Bremerton (360) 479-4663



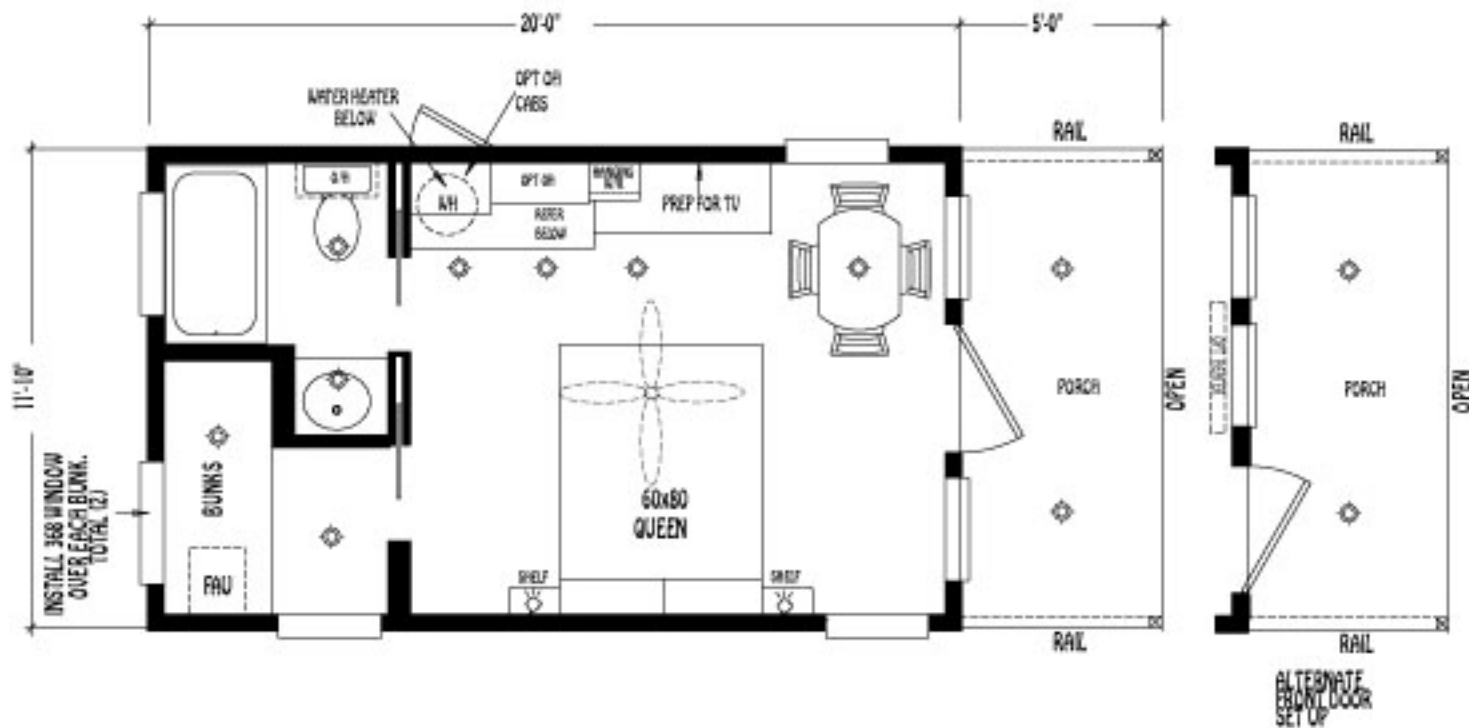
Creekside Cabins come in a variety of floorplans with standard features like spruce tongue & groove interior walls, laminate wood flooring, Lodge pole furniture, 10 year stained Cemplank siding and a green metal roof.

15 Floor Plans and Standard Features list below

Creekside Cabins MODEL: CC-2412 K

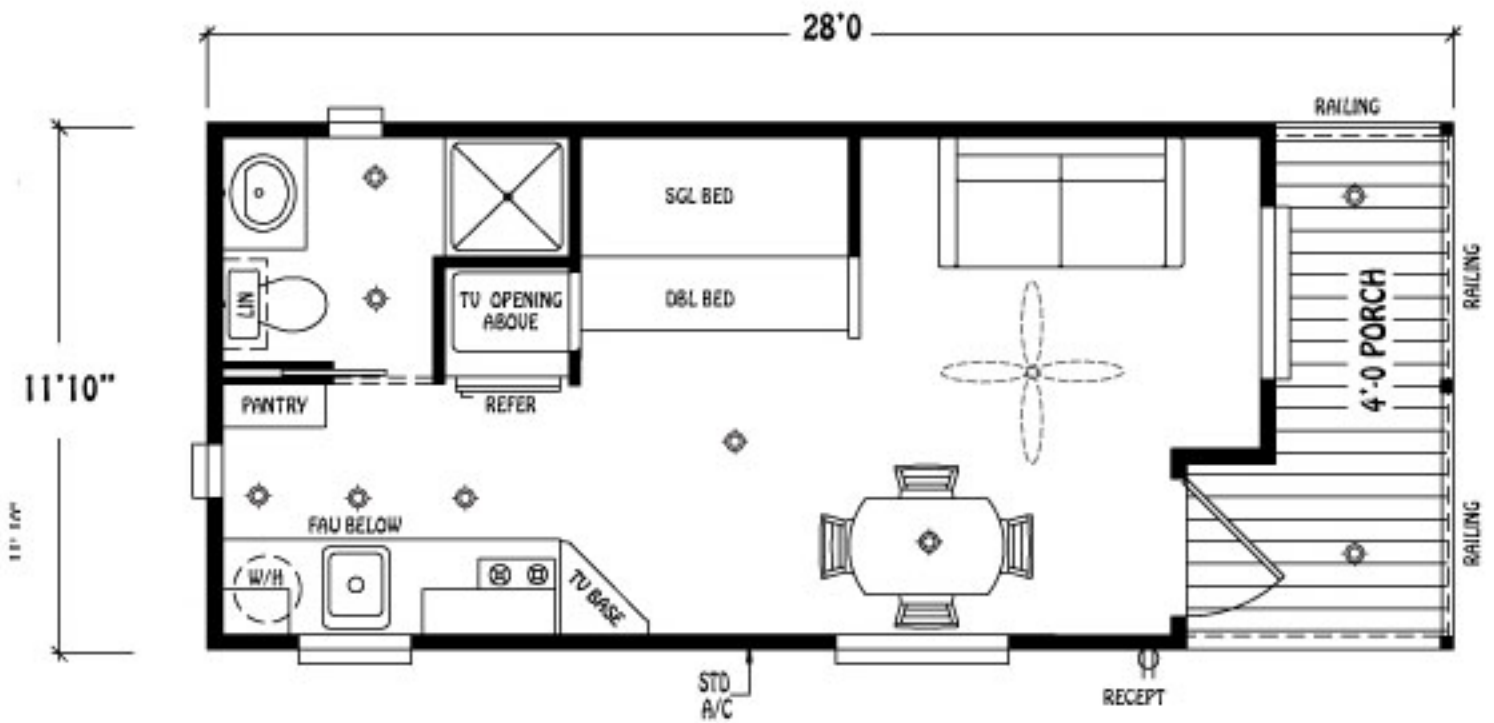


MODEL: CC-2512K

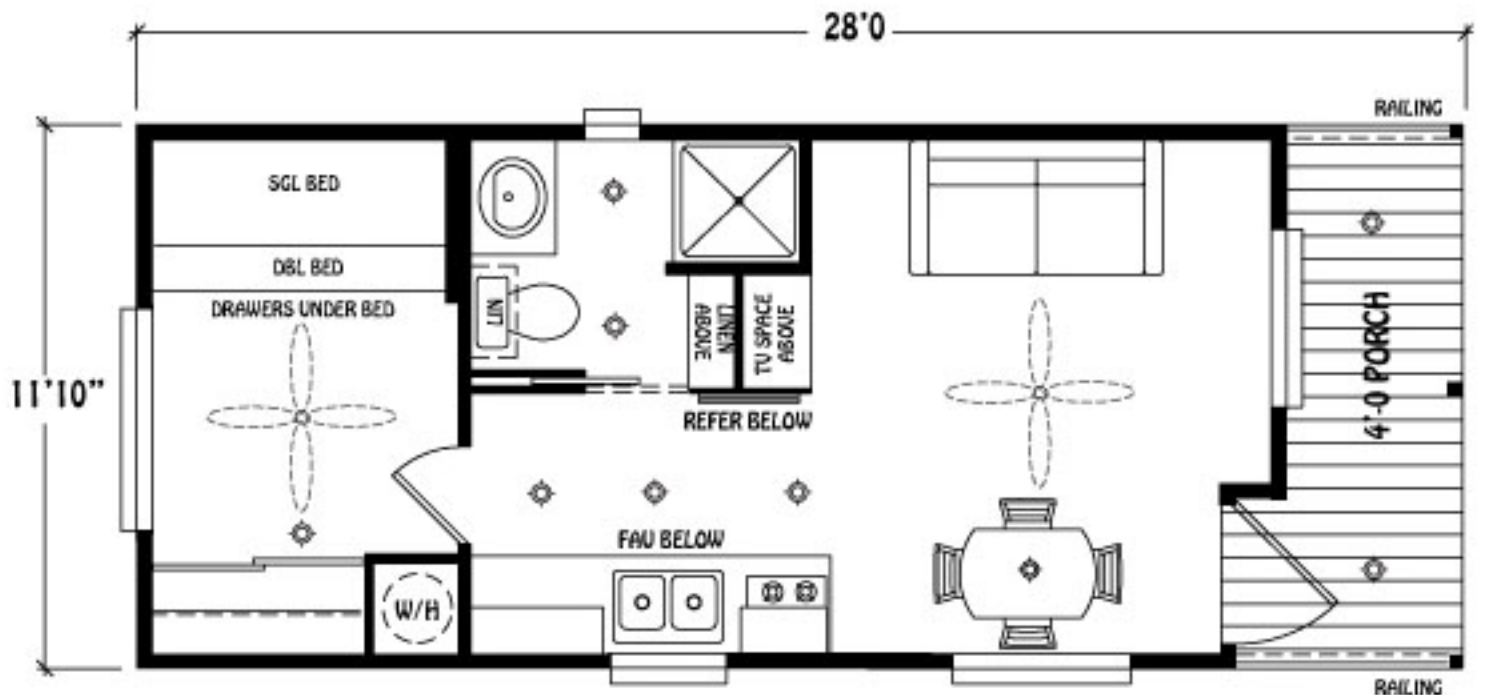


Creekside Cabins

MODEL: CC-2812 A

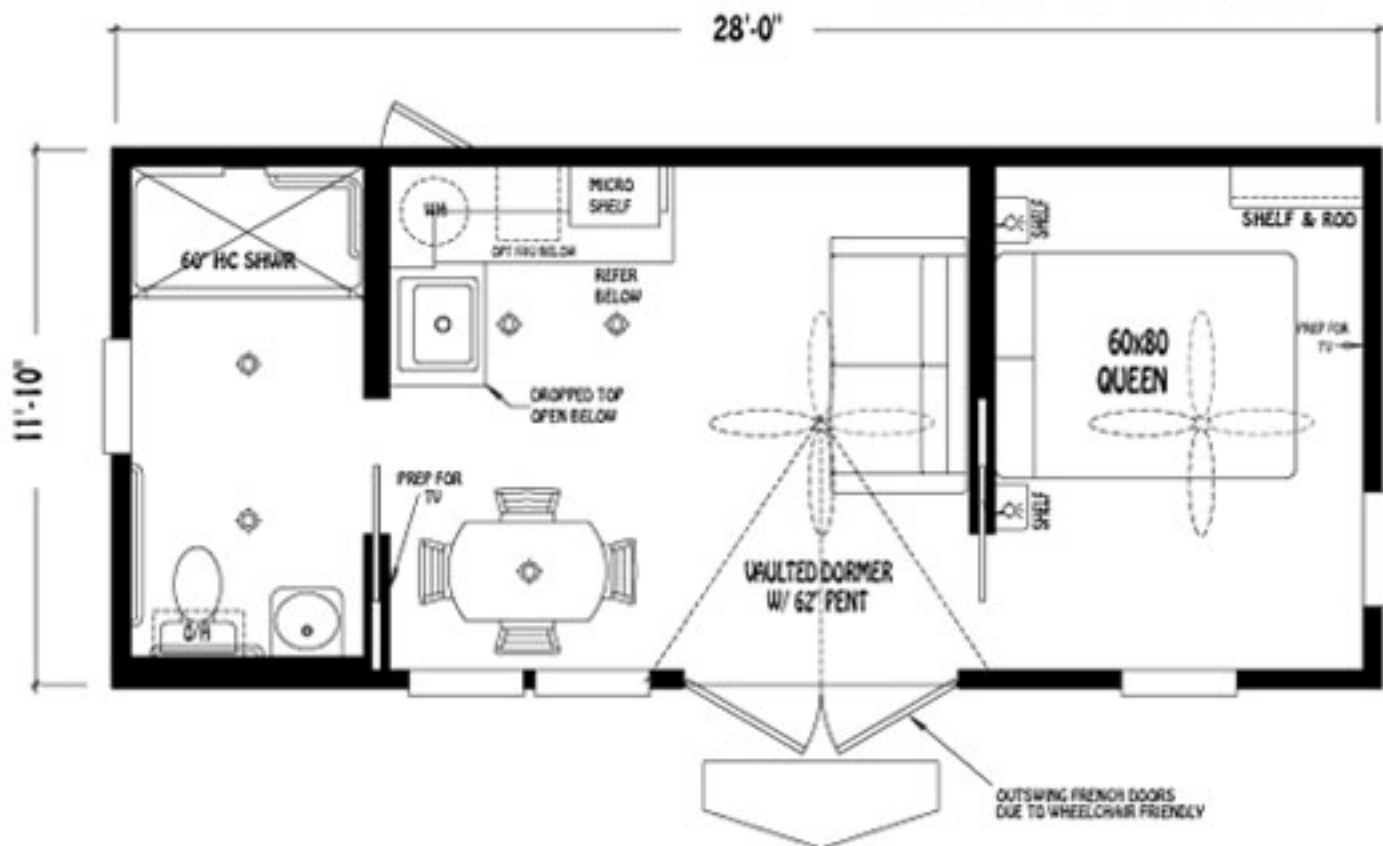


MODEL: CC-2812 B

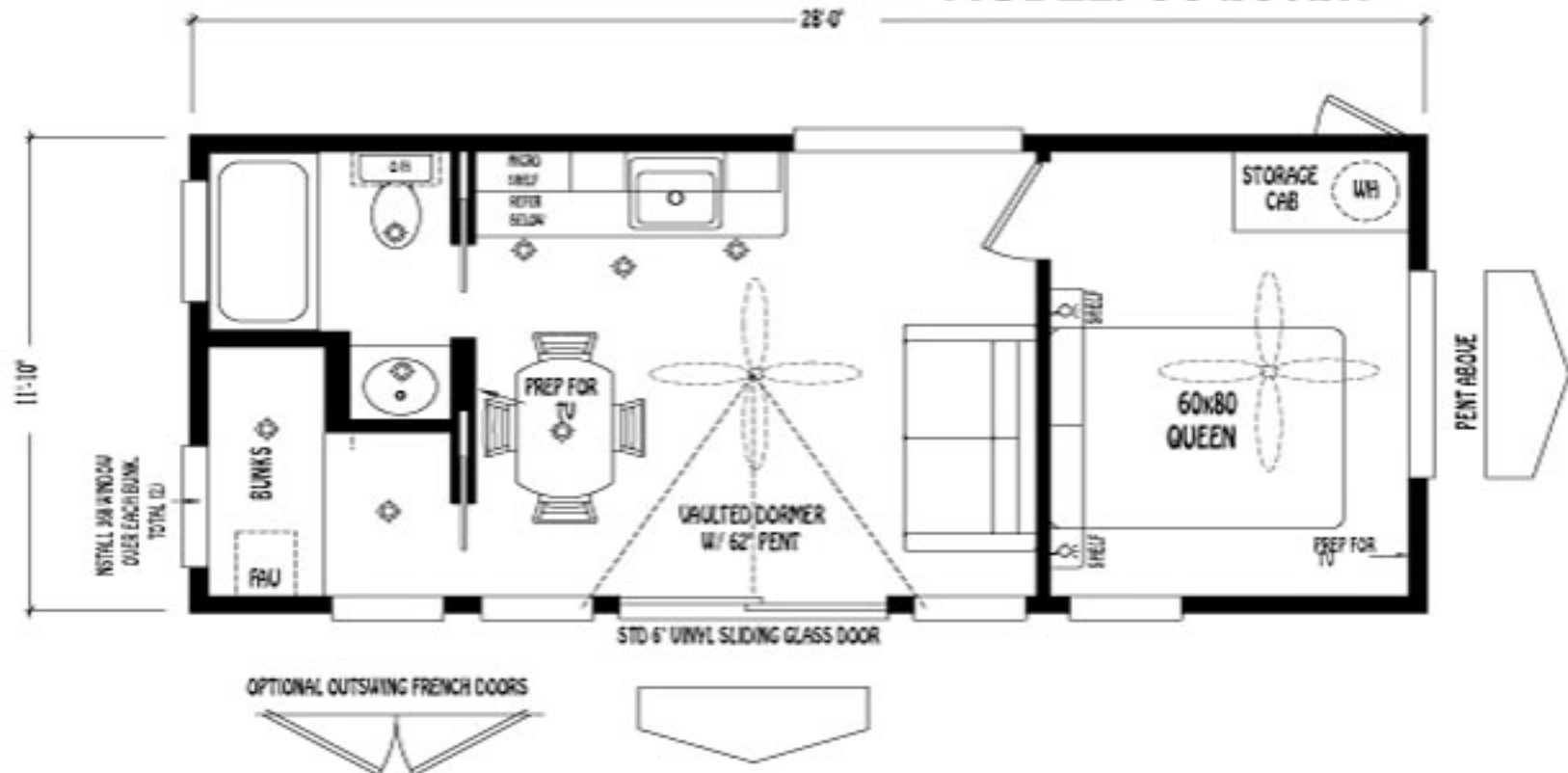


Creekside Cabins

MODEL: CC-2812 HK



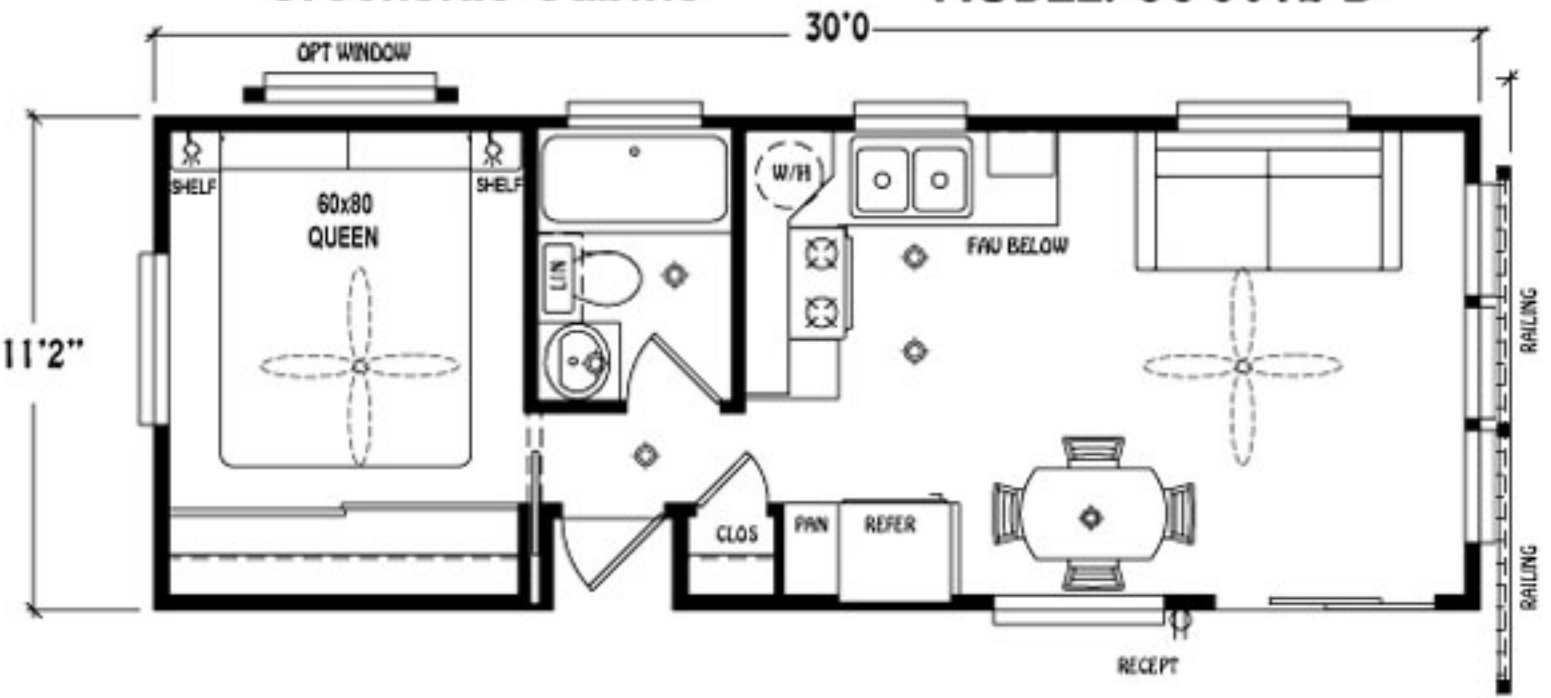
MODEL: CC-2812K



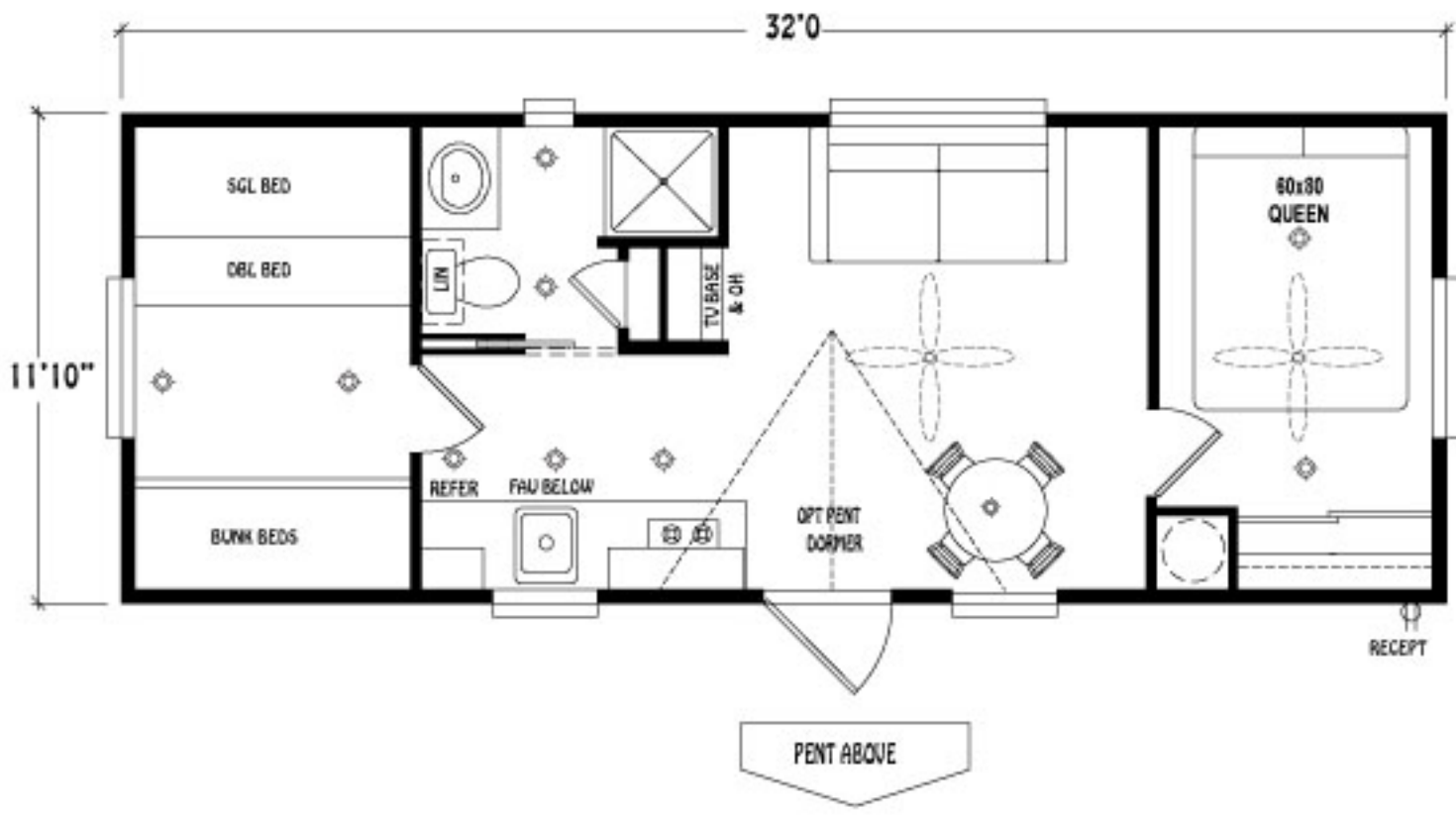
MODEL: CC-2812K

Creekside Cabins

MODEL: CC-3012 B

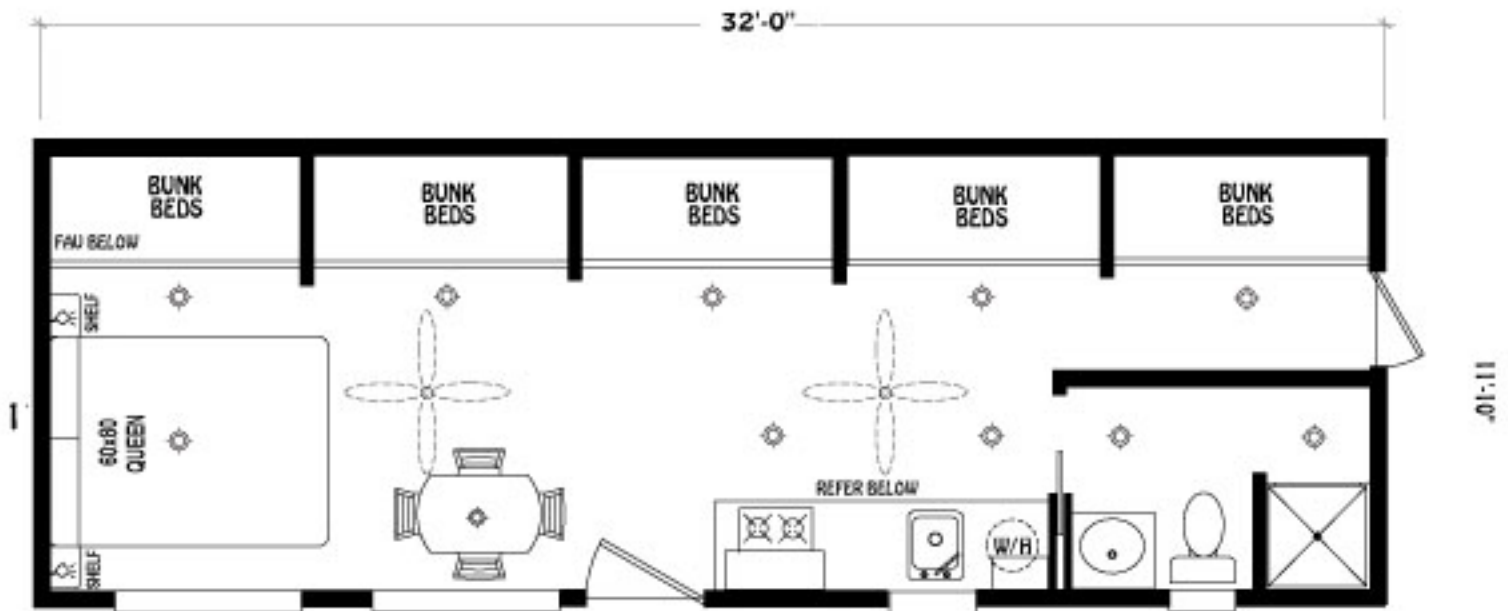


MODEL: CAB-3212 B

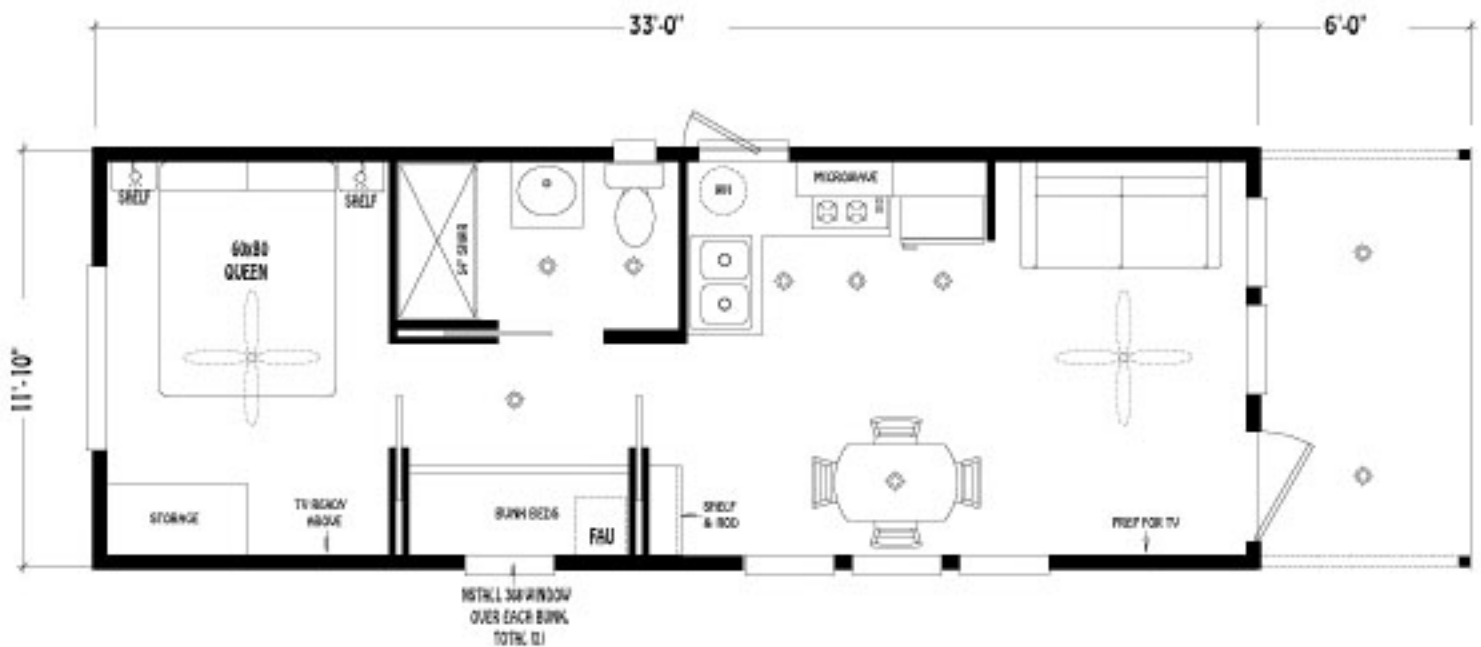


Creekside Cabins

MODEL: CC-3212 C

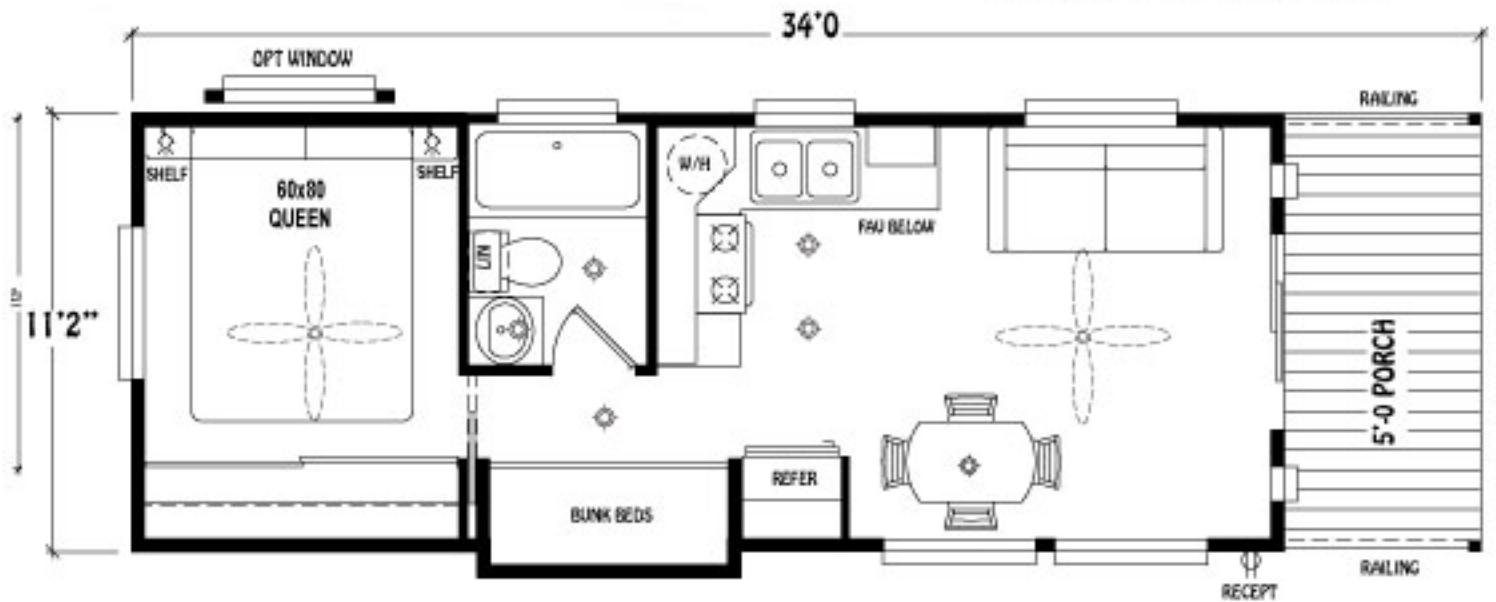


MODEL: CC-3312 K

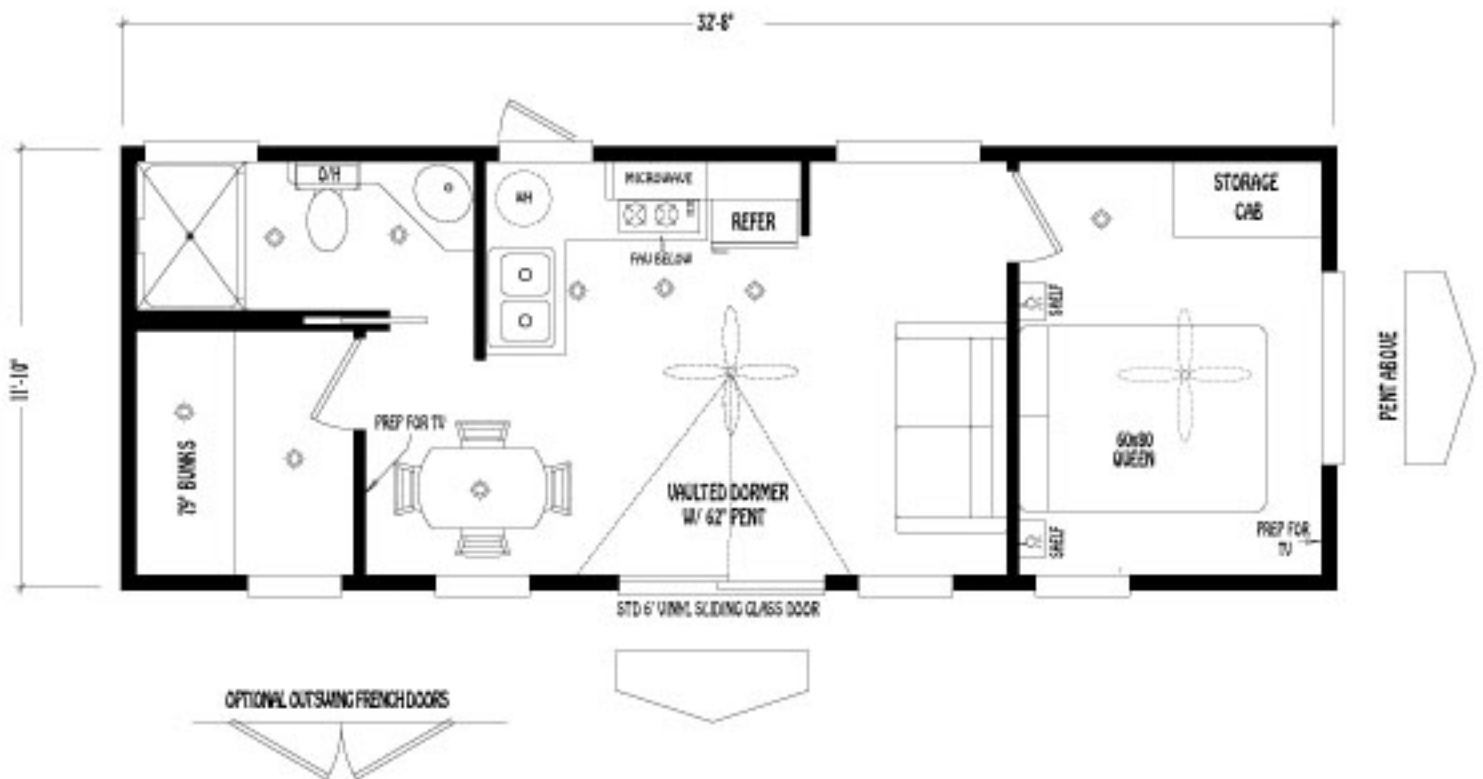


Creekside Cabins

MODEL: CC-3412 A

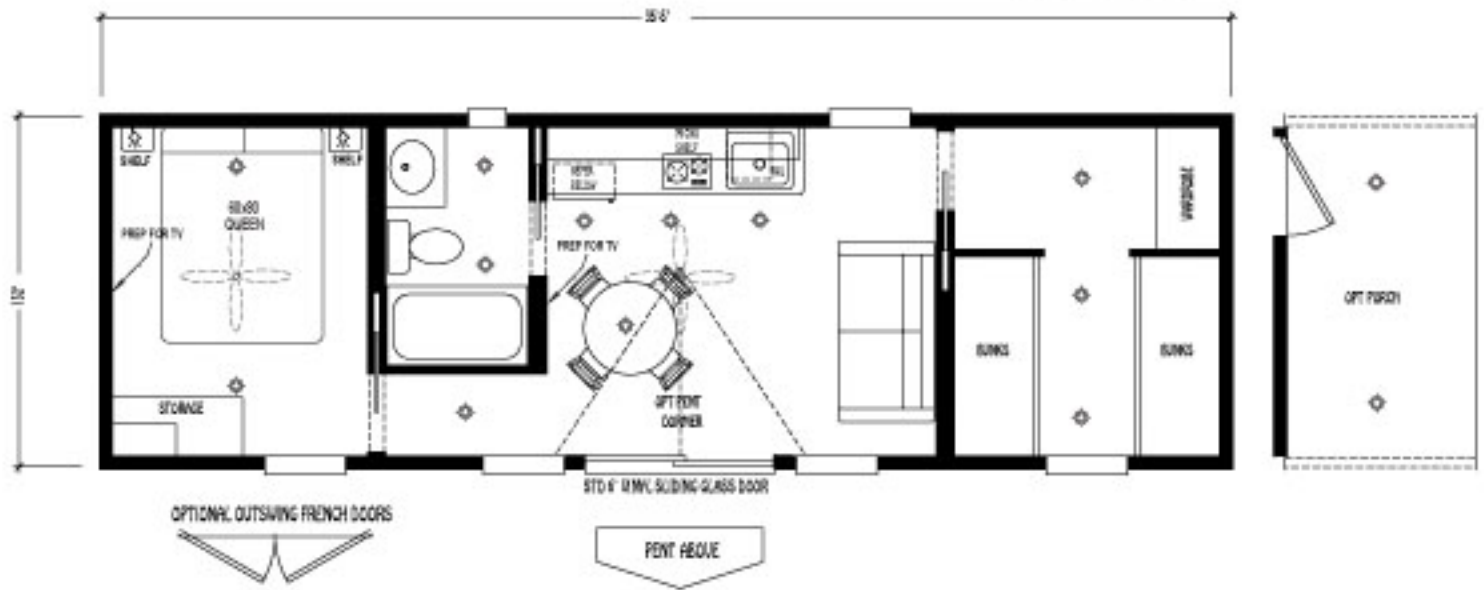


MODEL: CC-3412 K

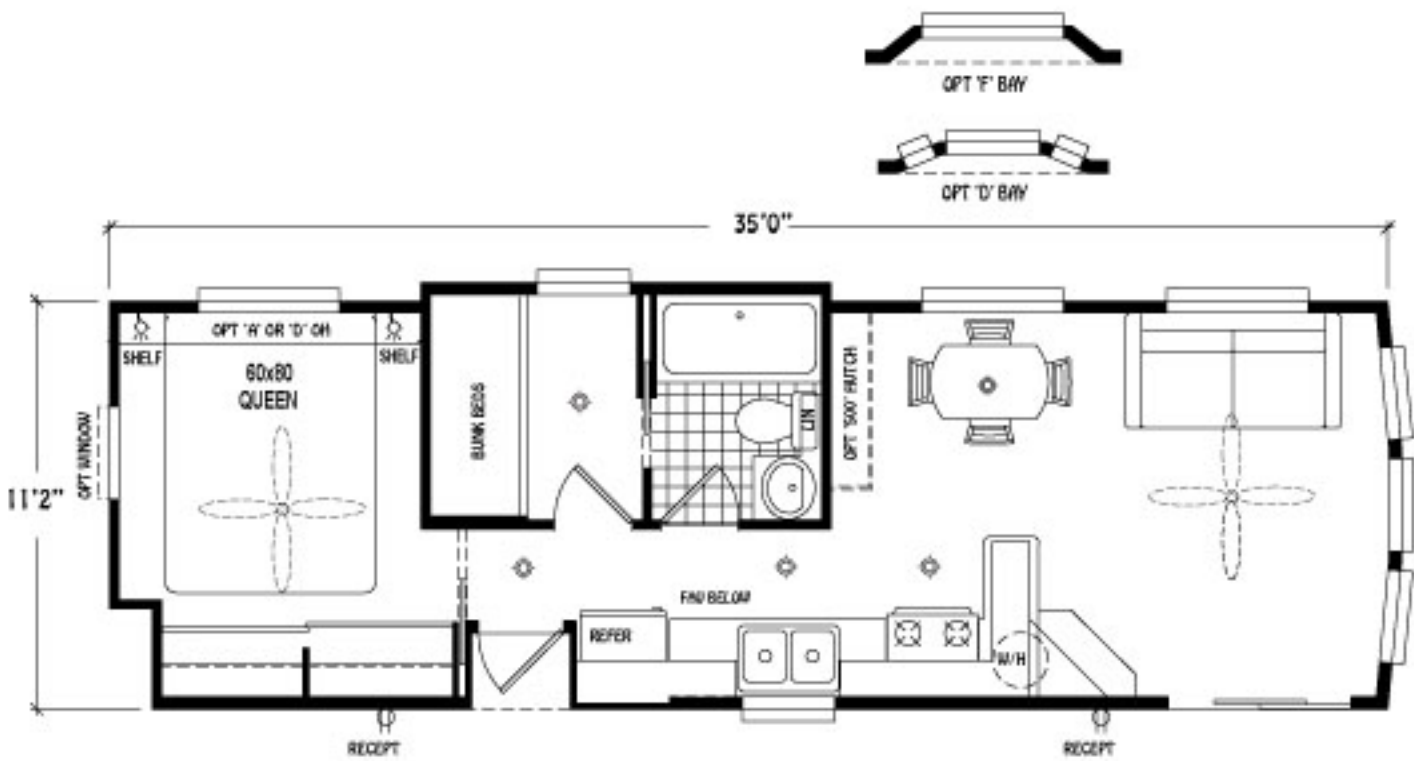


Creekside Cabins

CC-3512 A



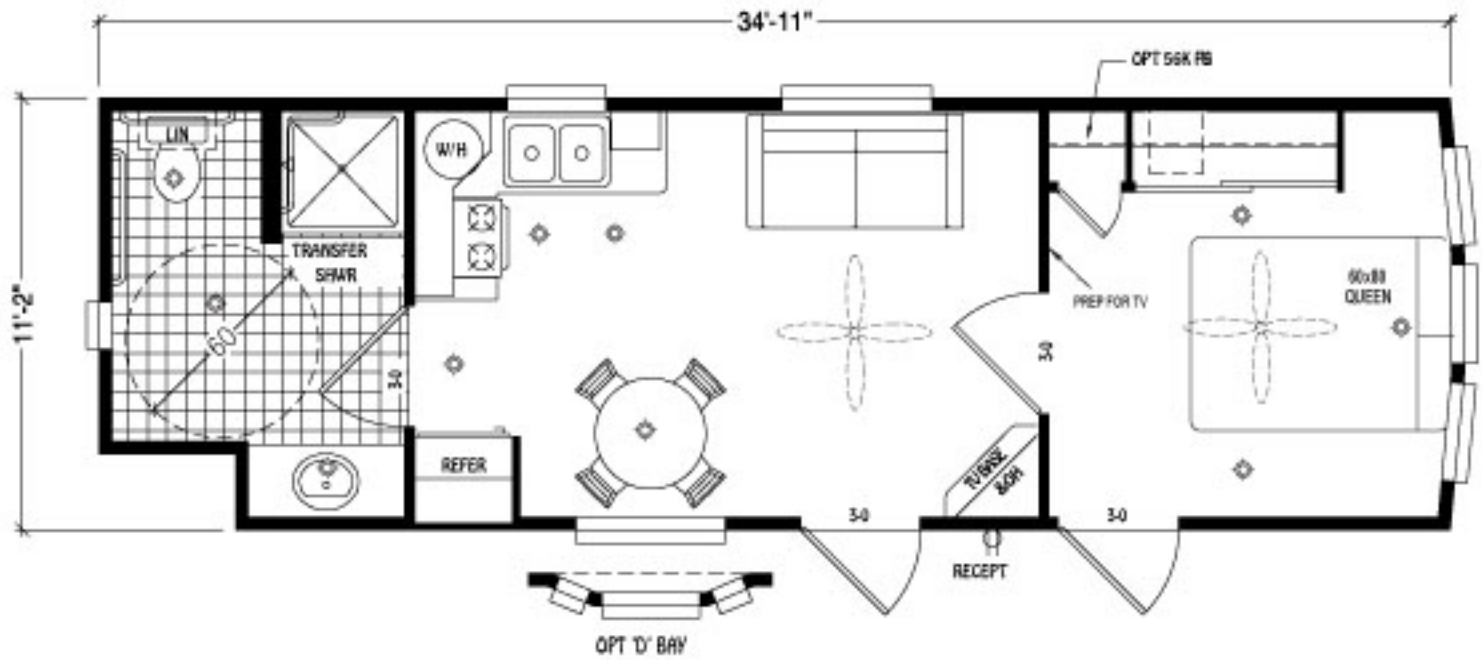
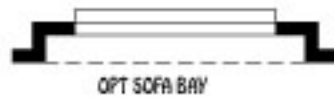
CC-3512 B



CC-3512 B

Creekside Cabins

CC-3512 HC



Creekside Cabins Standard Features

Future Home of Bremerton

360-479-4663

INTERIOR

- 1"x6" T&G clear sealed pine throughout
- 1/2" drywall taped, textured and painted ceilings
- Cathedral ceilings throughout except loft areas
- Wood grain interior passage and pocket doors with heavy duty hardware
- 2" white faux mini blinds throughout except clerestory windows
- Woodgrain Congoleum Vinyl flooring throughout
- 1x sealed pine trim throughout
- Upgrade lighting package
- Smoke detector
- Fire extinguisher
- LP Leak Gas Detector in units with propane
- Heavy steel welded and powder coated loft railing (per floorplan)
- Heavy steel welded and powder coated bunk railing (per floorplan)
- Heavy steel welded and powder coated bunk ladder (per floorplan)
- Satin fixtures throughout
- Vinyl cove base throughout
- Cable TV rough in on wall
- 2-Bunk mattresses in bunk room (per floorplan)

KITCHEN / BATHROOM

- Laminate countertops and backsplashes
- Appliance packages (varies per floorplan and specifications)
- Real wood cabinet doors and face frames with hidden hinges
- Drawers with double steel roller guides
- Satin finish single lever kitchen faucet (Per Floorplan)
- Stainless steel kitchen sink (Per Floorplan)
- "Lasco" One piece fiberglass tub / shower or shower only
- Bathroom exhaust fan
- Microwave Oven

EXTERIOR

- Colored metal roof
- Stained "Certainteed" lap exterior siding with OSB wood wrap and building wrap
- 2"x4" exterior trim around windows and corners
- Black exterior lights at each door
- Beige vinyl framed low "E" dual glaze windows throughout
- Front and rear overhangs
- Exterior GFI receptacle
- Beige vinyl 6' sliding glass door

Creekside Cabins Standard Features

PLUMBING, ELECTRICAL, HEATING & INSULATION

- PEX waterlines with low point drain
- Residential style U.L. approved electrical devices throughout
- 30 or 50 amp exterior main panel service with supply cord
- Easy touch rocker light switches throughout
- R-22 fiberglass floor insulation
- R-11 fiberglass sidewall insulation
- R-28 cellulose blown insulation (per roof pitch)
- Black iron gas pipe run to front hitch end
- Under sink waterline shut-off valves
- 20 gallon electric water with metal pan and drain
- GFI protection in bath and kitchen
- 40,000 BTU propane gas furnace

CONSTRUCTION

- Full 8" I-beam chassis construction
- Transverse 2" x 6" #2 or better fir floor joists 16" O.C.
- Detachable hitch from main chassis
- Woven simplex underbelly material
- 2" x 4" sidewalls 16" O.C.
- 30 gauge steel strapping for truss to sidewall and floor to sidewall strength
- Composite decking on porch models (Per Floorplan)
- RPTIA approved
- ANSI approved