

# **Cavco Cascadia Series Park Models**

*Fine homes with a Northwest design flair*

**Future Homes of Bremerton (360) 479-4663**

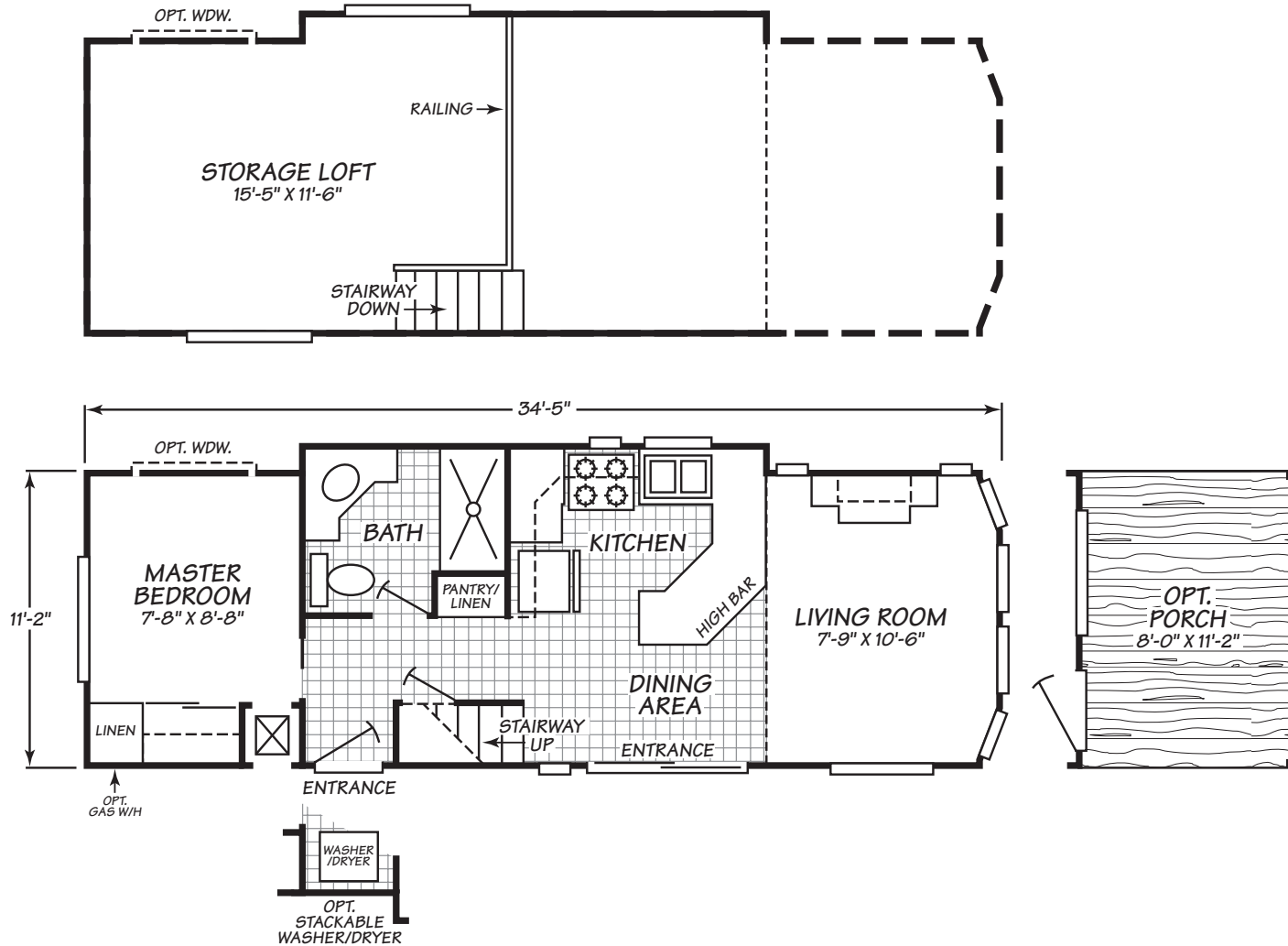


**Six floor plans with standard features list follow**



# Cascadia Series Model 1331L

1 Bedroom • 1 Bath • 400 Square Feet

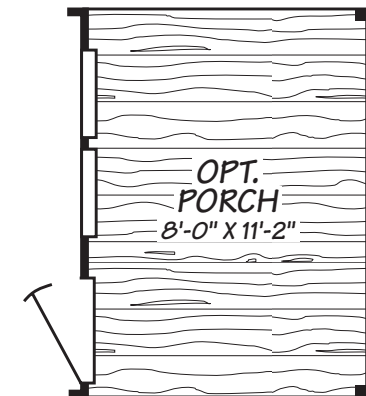
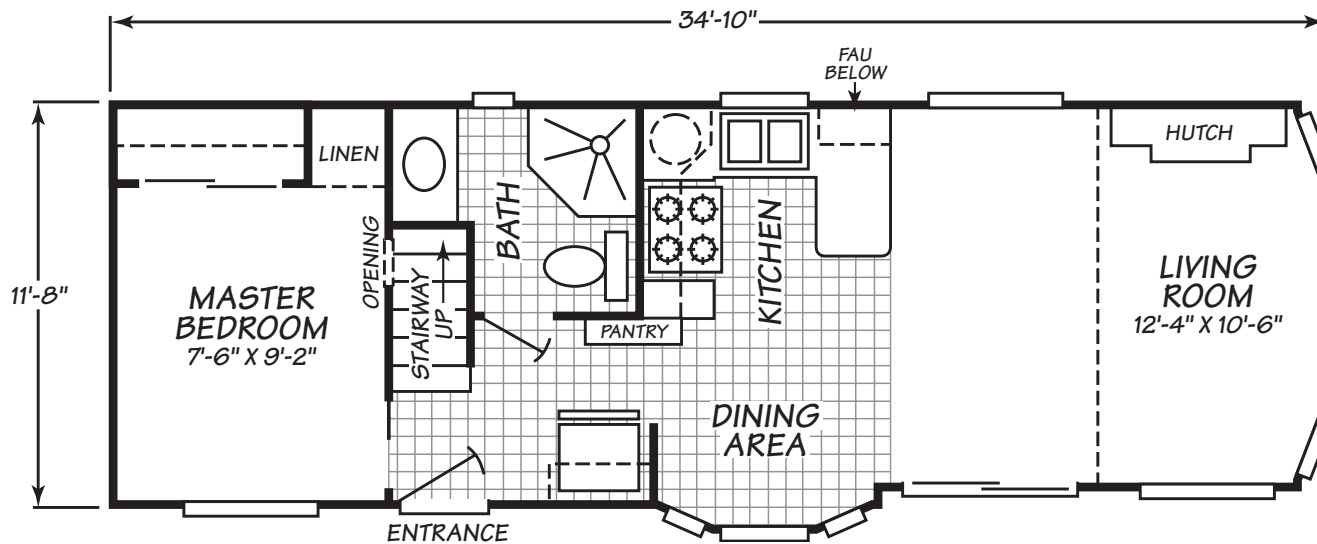
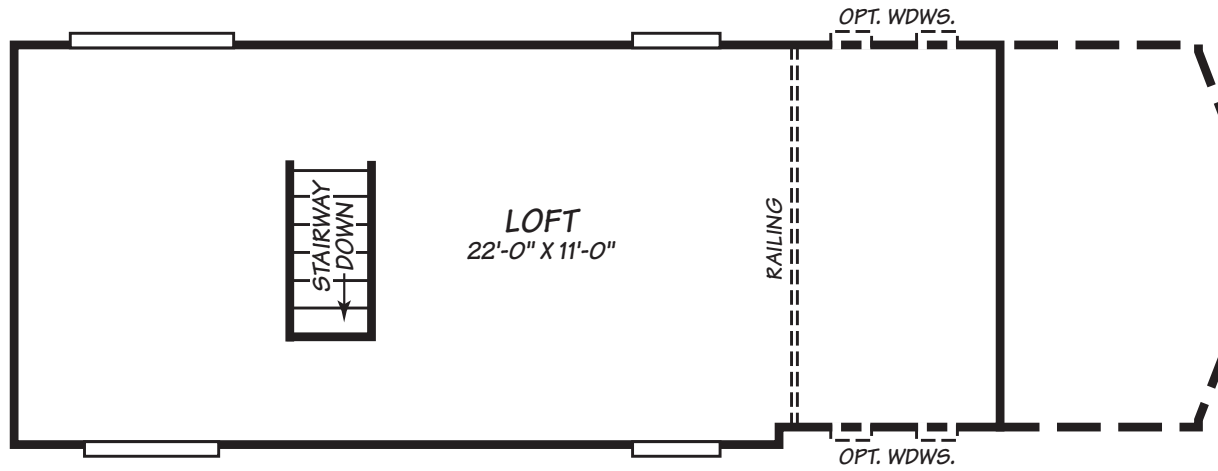


Fleetwood Homes reserves the right to change colors, prices, specifications, models, dimensions and materials without notice. Rendering and diagrams are meant to be representative and, in keeping with Fleetwood's policy of constant updating and improvement, may vary from the actual home. All dimensions are nominal and approximated. Square footage is measured from exterior wall to exterior wall, and is an approximate figure. Length indicated in floorplans is floor length only. The length of the hitch is not included. (Add four feet to arrive at transportable length.) Ask your retailer for specifics. PRICES AND SPECIFICATIONS SUBJECT TO CHANGE WITHOUT NOTICE OR OBLIGATION.



# Cascadia Series Model 1351B

1 Bedroom • 1 Bath • 399 Square Feet

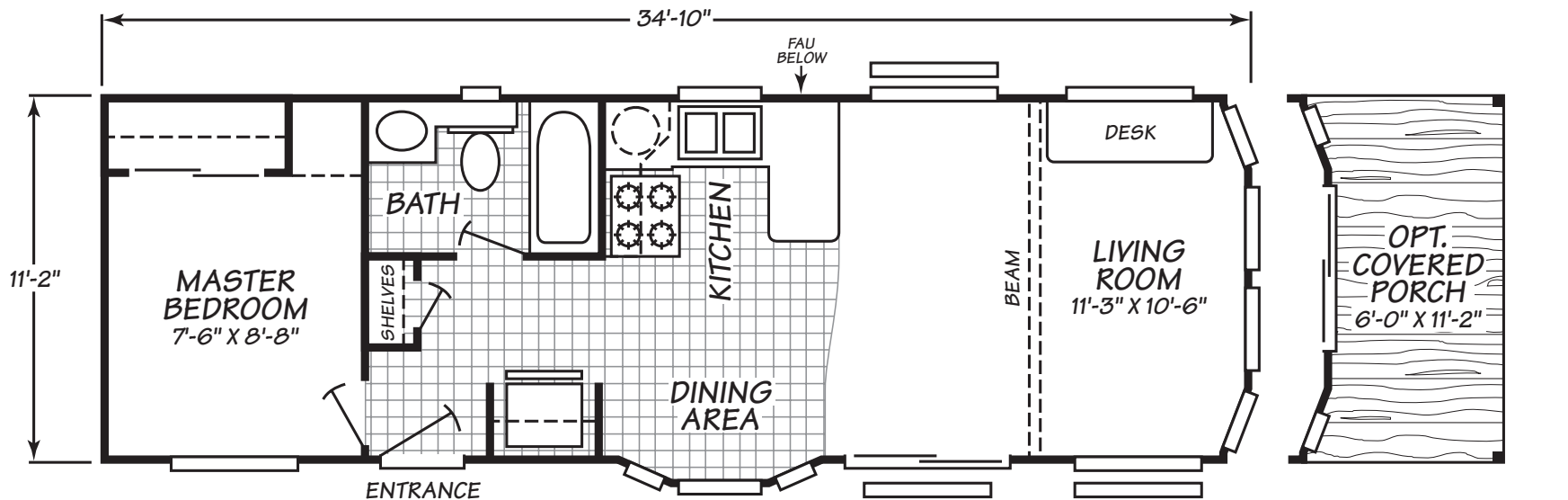


Fleetwood Homes reserves the right to change colors, prices, specifications, models, dimensions and materials without notice. Rendering and diagrams are meant to be representative and, in keeping with Fleetwood's policy of constant updating and improvement, may vary from the actual home. All dimensions are nominal and approximated. Square footage is measured from exterior wall to exterior wall, and is an approximate figure. Length indicated in floorplans is floor length only. The length of the hitch is not included. (Add four feet to arrive at transportable length.) Ask your retailer for specifics. PRICES AND SPECIFICATIONS SUBJECT TO CHANGE WITHOUT NOTICE OR OBLIGATION.



# Cascadia Series Model 1351C

1 Bedroom • 1 Bath • 389 Square Feet

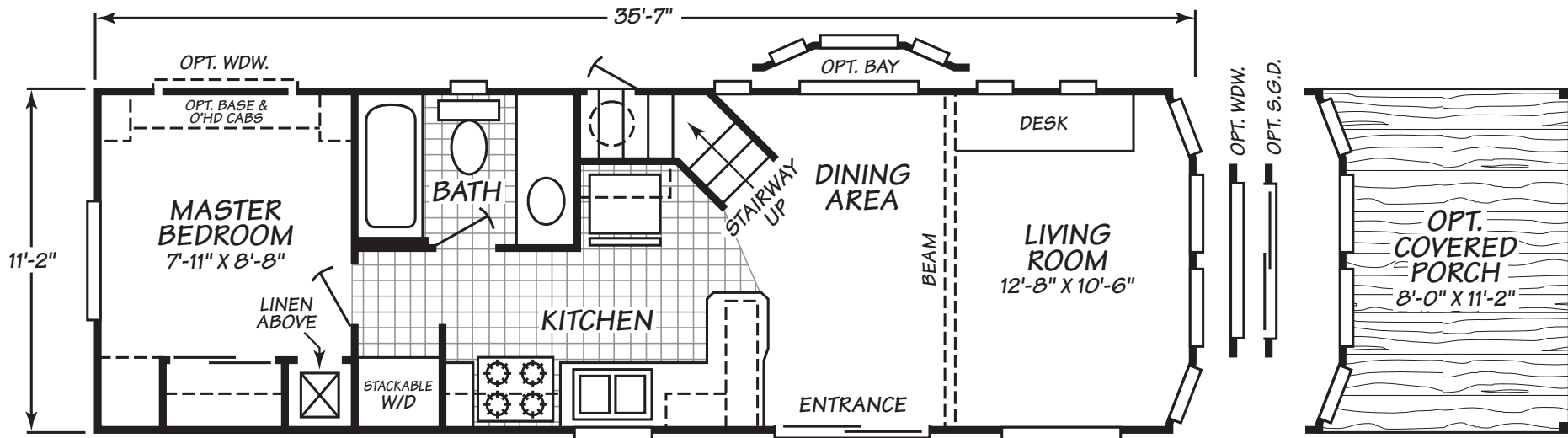
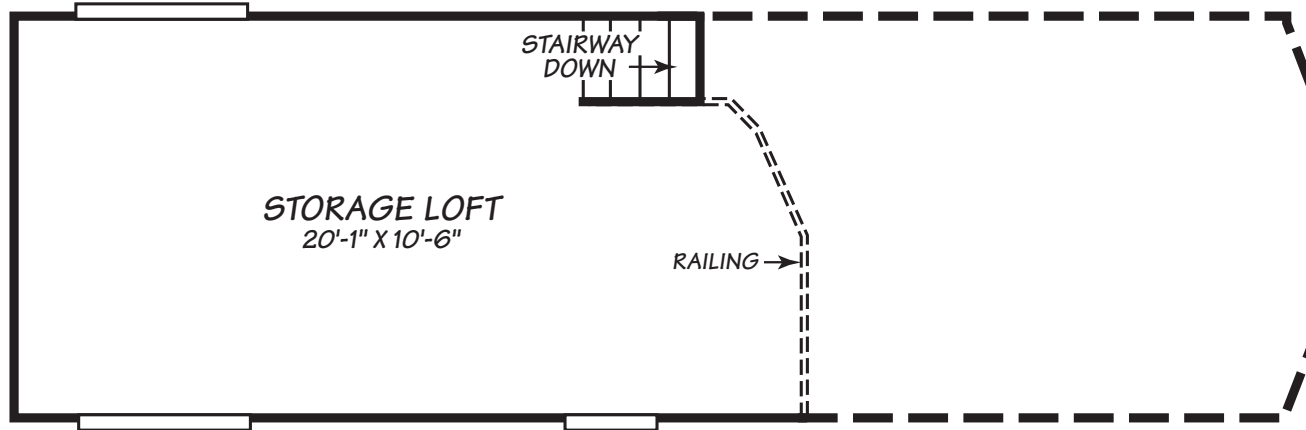


Fleetwood Homes reserves the right to change colors, prices, specifications, models, dimensions and materials without notice. Rendering and diagrams are meant to be representative and, in keeping with Fleetwood's policy of constant updating and improvement, may vary from the actual home. All dimensions are nominal and approximated. Square footage is measured from exterior wall to exterior wall, and is an approximate figure. Length indicated in floorplans is floor length only. The length of the hitch is not included. (Add four feet to arrive at transportable length.) Ask your retailer for specifics. PRICES AND SPECIFICATIONS SUBJECT TO CHANGE WITHOUT NOTICE OR OBLIGATION.



# Cascadia Series Model 1351D

1 Bedroom • 1 Bath • 365 Square Feet

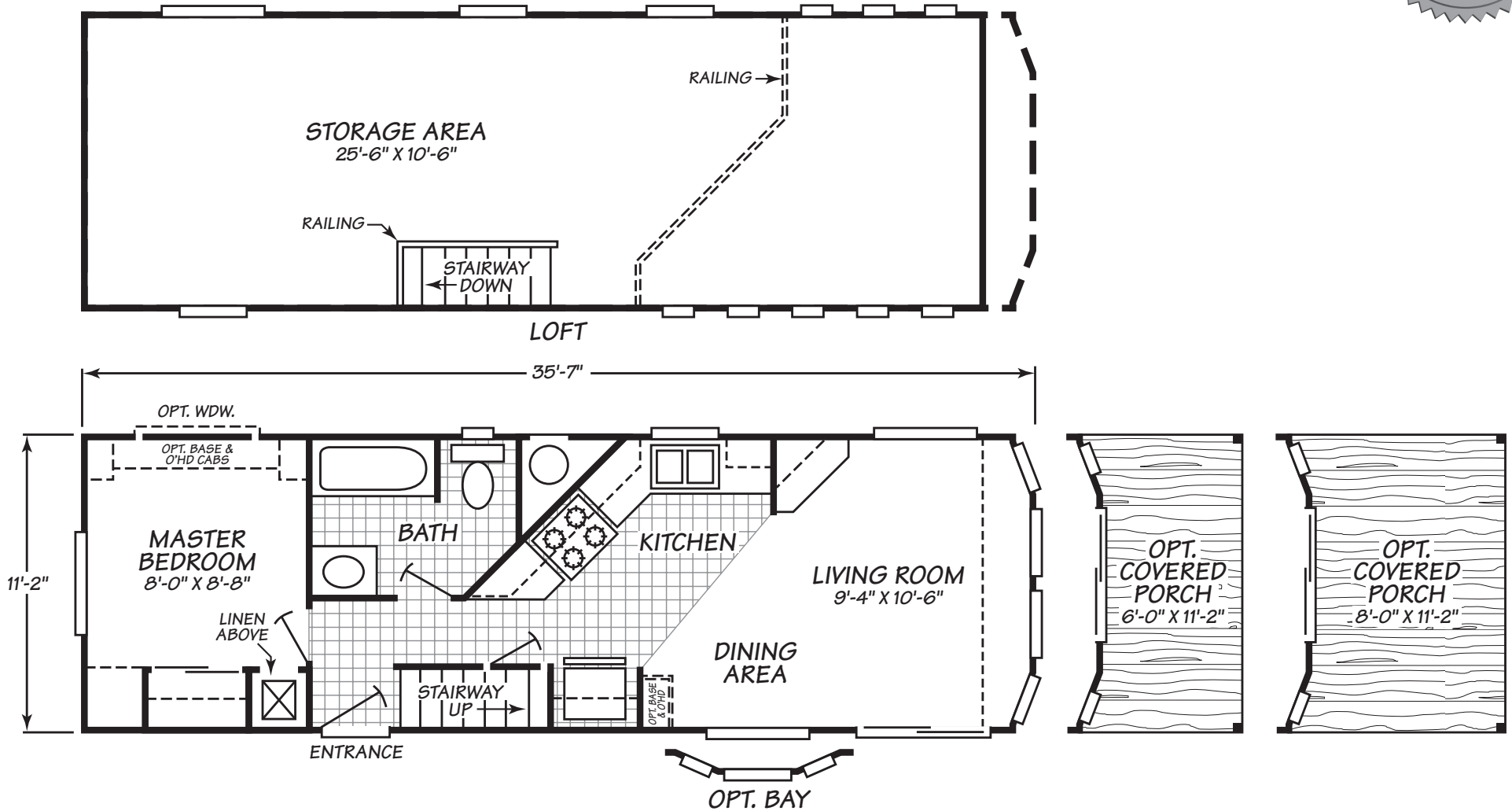


Fleetwood Homes reserves the right to change colors, prices, specifications, models, dimensions and materials without notice. Rendering and diagrams are meant to be representative and, in keeping with Fleetwood's policy of constant updating and improvement, may vary from the actual home. All dimensions are nominal and approximated. Square footage is measured from exterior wall to exterior wall, and is an approximate figure. Length indicated in floorplans is floor length only. The length of the hitch is not included. (Add four feet to arrive at transportable length.) Ask your retailer for specifics. PRICES AND SPECIFICATIONS SUBJECT TO CHANGE WITHOUT NOTICE OR OBLIGATION.



# Cascadia Series Model 1351G

1 Bedroom • 1 Bath • 395 Square Feet

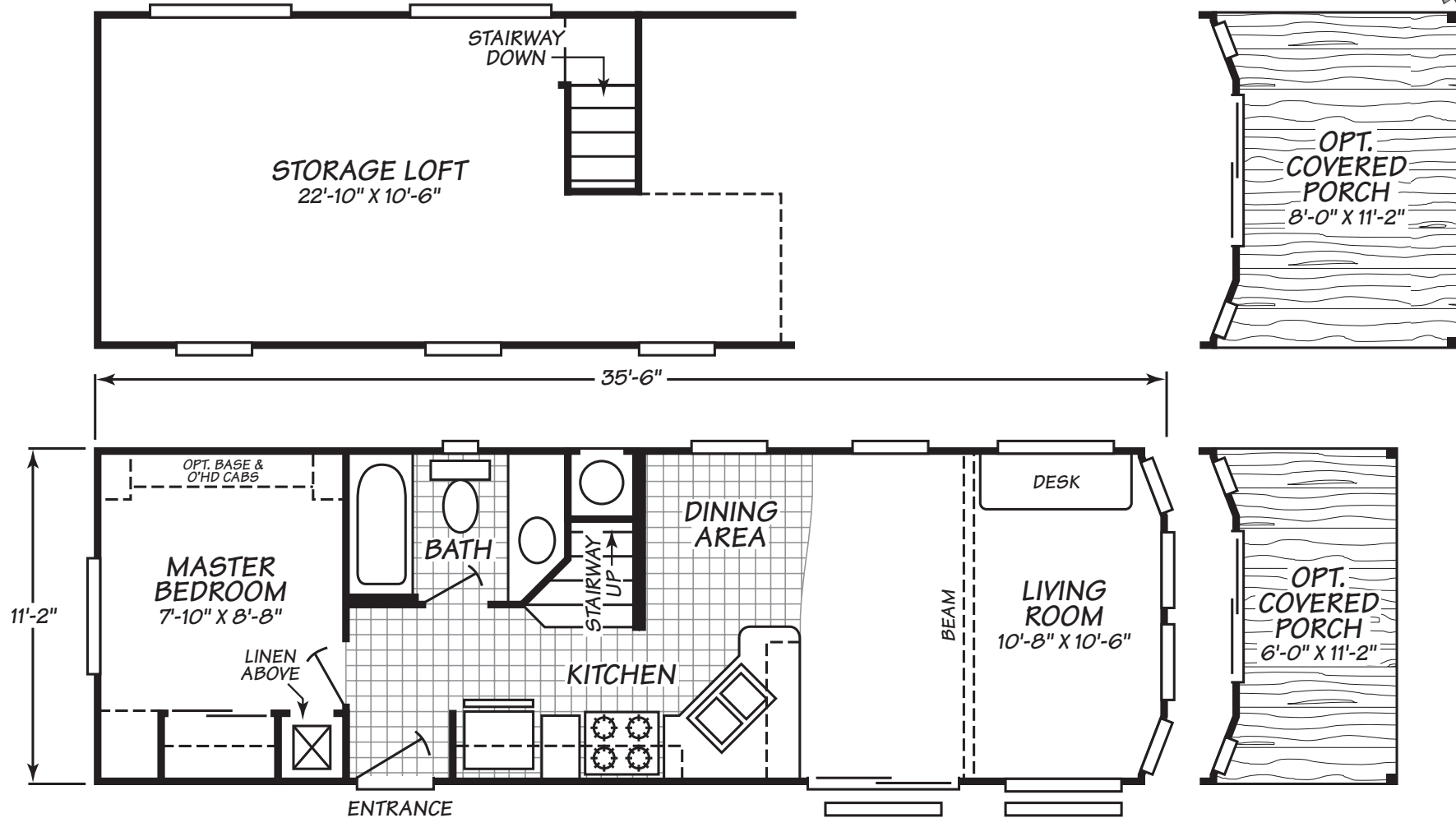


Fleetwood Homes reserves the right to change colors, prices, specifications, models, dimensions and materials without notice. Rendering and diagrams are meant to be representative and, in keeping with Fleetwood's policy of constant updating and improvement, may vary from the actual home. All dimensions are nominal and approximated. Square footage is measured from exterior wall to exterior wall, and is an approximate figure. Length indicated in floorplans is floor length only. The length of the hitch is not included. (Add four feet to arrive at transportable length.) Ask your retailer for specifics. PRICES AND SPECIFICATIONS SUBJECT TO CHANGE WITHOUT NOTICE OR OBLIGATION.



# Cascadia Series Model 1371A

1 Bedroom • 1 Bath • 394 Square Feet



Fleetwood Homes reserves the right to change colors, prices, specifications, models, dimensions and materials without notice. Rendering and diagrams are meant to be representative and, in keeping with Fleetwood's policy of constant updating and improvement, may vary from the actual home. All dimensions are nominal and approximated. Square footage is measured from exterior wall to exterior wall, and is an approximate figure. Length indicated in floorplans is floor length only. The length of the hitch is not included. (Add four feet to arrive at transportable length.) Ask your retailer for specifics. PRICES AND SPECIFICATIONS SUBJECT TO CHANGE WITHOUT NOTICE OR OBLIGATION.

# Cascadia Park Model Standard Features

Future Homes of Bremerton

360-479-4663

## Interior

- Decorative vinyl covered gypsum walls are designer coordinated.
- Wood grain molding package.
- Wood wainscoat treatment in the living and/or dining area (varies by model).
- Wood cornice boxes with designer fabric treatment in the kitchen, and living/dining rooms. Mini blinds in bedroom and bath.
- Deluxe lighting package.
- 100% Nylon carpet in the living room and bedroom (and loft if applicable).
- 6# rebond carpet pad.
- Vinyl flooring with a heavy wear layer decorates the kitchen and bath floors.
- Brushed nickel door and cabinet hardware.
- Wood grain interior doors with matching trim.
- Smoke detector.
- Fire extinguisher.

## Kitchen

- Real wood cabinet doors
- Overhead cabinets are lined in an easy clean woodgrain pattern.
- 30" overhead cabinets with adjustable shelves.
- Crown molding on cabinets.
- Ceramic tile backsplash.
- Stainless steel sink.
- Drawer bank per plan.
- 18 Cu. Ft. frost free refer.
- 30" gas range.
- Exhaust fan.

## Bathroom

- 54" fiberglass tub/shower or 48" stall shower, per plan.
- China sink.
- Brushed nickel faucets.
- Medicine cabinet with mirror.
- 4" tile backsplash.

## Bedroom

- Mirrored wardrobe doors
- Built in entertainment center.
- Switched receptacle
- Egress windows

# Cascadia Park Model Standard Features

## Exterior

- LP Smart Panel siding with Limited 50 year warranty.
- Wainscot lap siding on all 4 sides (4 rows of lap).
- Energy efficient vinyl windows with low-e coating.
- 4 window front bay window.
- Porch light at all doors.
- 32" inswing rear door

## Plumbing, Electrical, Heating

- Pex hot and cold water lines.
- 40,000 BTU propane furnace.
- 20 gallon electric water heater.
- 50 amp main panel with "pigtail" cord.
- Black iron gas pipe run to front hitch end.
- Aluminum heat ducting with coordinated floor registers.
- Under sink waterline shut-off valves.
- R-11 fiberglass floor insulation.
- R-11 fiberglass sidewall insulation.
- R-22 cellulose blown ceiling insulation.

## Construction

- Full I-beam chassis construction
- Transverse 2" x 6" Floor Joists
- Detachable hitch from main chassis
- Woven simplex underbelly material
- 8' x 12' high density floor decking
- 2" x 4" sidewalls 16" O.C.
- Pre-engineered scissor trusses 16" O.C.
- 30 gauge steel strapping for truss to sidewall and floor to sidewall strength
- RPTIA approved
- ANSI approved