

# **Cavco Cascadia Value Series Park Models**

*Cascadia Value Series features quality construction with a smaller price tag*

**Future Homes of Bremerton (360) 479-4663**

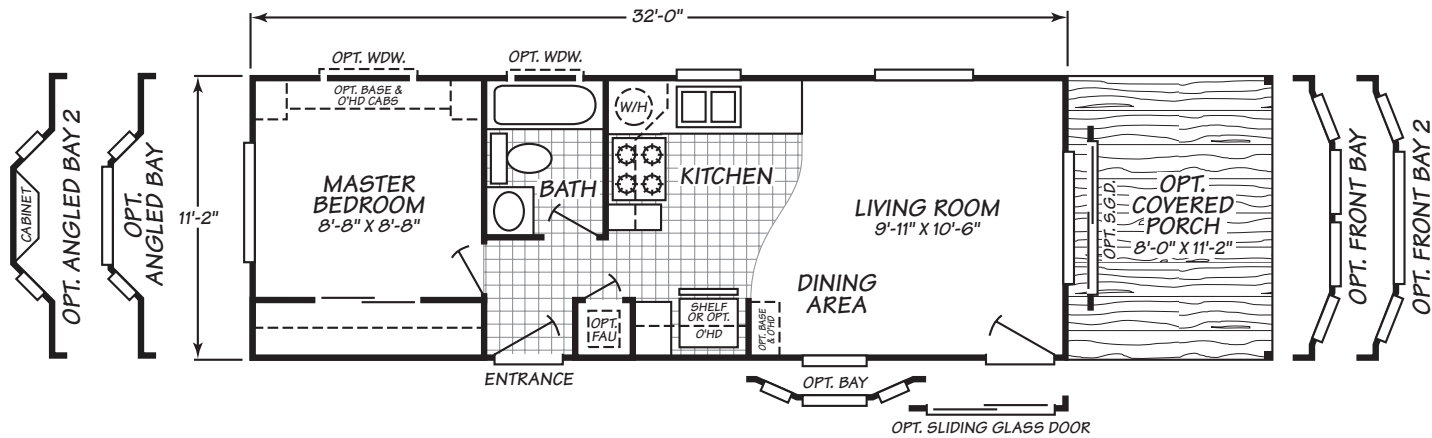


**Two Floor Plans and Standard Features List below**



# Cascadia Value Series Model 1321T

1 Bedroom • 1 Bath • 357 Square Feet

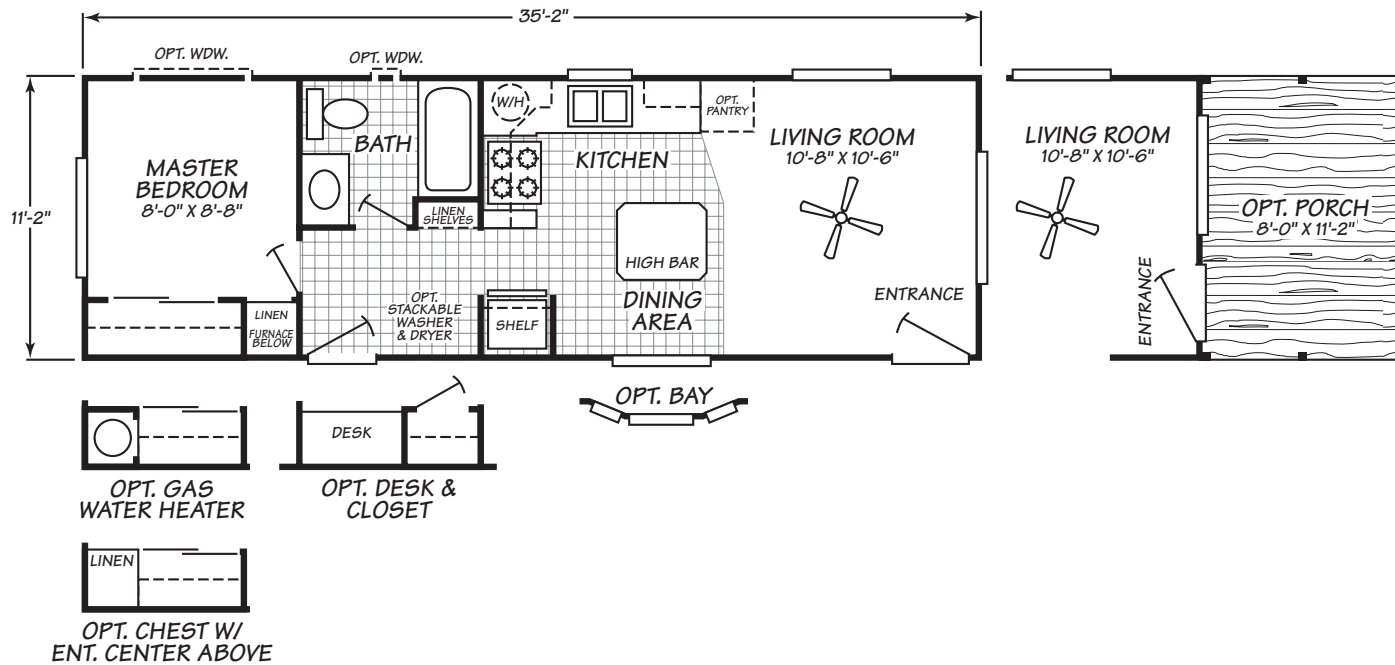


Fleetwood Homes reserves the right to change colors, prices, specifications, models, dimensions and materials without notice. Rendering and diagrams are meant to be representative and, in keeping with Fleetwood's policy of constant updating and improvement, may vary from the actual home. All dimensions are nominal and approximated. Square footage is measured from exterior wall to exterior wall, and is an approximate figure. Length indicated in floorplans is floor length only. The length of the hitch is not included. (Add four feet to arrive at transportable length.) Ask your retailer for specifics. PRICES AND SPECIFICATIONS SUBJECT TO CHANGE WITHOUT NOTICE OR OBLIGATION.



# Cascadia Value Series Model 1351U

1 Bedroom • 1 Bath • 392 Square Feet



Fleetwood Homes reserves the right to change colors, prices, specifications, models, dimensions and materials without notice. Rendering and diagrams are meant to be representative and, in keeping with Fleetwood's policy of constant updating and improvement, may vary from the actual home. All dimensions are nominal and approximated. Square footage is measured from exterior wall to exterior wall, and is an approximate figure. Length indicated in floorplans is floor length only. The length of the hitch is not included. (Add four feet to arrive at transportable length.) Ask your retailer for specifics. PRICES AND SPECIFICATIONS SUBJECT TO CHANGE WITHOUT NOTICE OR OBLIGATION.

# Cascadia Value Series Park Model Standard Features

Future Homes of Bremerton

360-479-4663

## Interior

- Decorative vinyl covered gypsum walls are designer chosen.
- Wood cornice boxes with designer fabric treatment in the kitchen, and living/dining rooms. Mini blinds in bedroom and bath.
- Deluxe lighting package.
- 100% Nylon carpet in the living room and bedroom (and loft if applicable).
- Vinyl flooring with a heavy wear layer decorates the kitchen and bath floors.
- Brushed nickel door and cabinet hardware.
- Smoke detector.
- Fire extinguisher.

## Kitchen

- Raised panel cabinet doors
- 30" overhead cabinets with adjustable shelves.
- Crown molding on cabinets.
- Ceramic tile backsplash.
- Stainless steel sink.
- Drawer bank per plan.
- 18 Cu. Ft. frost free refer.
- 30" gas range.
- Exhaust fan.

## Bathroom

- 54" tub/shower
- Brushed nickel faucets.
- Tile backsplash.

## Bedroom

- Full size wardrobes.
- Switched receptacle
- Egress windows

## Exterior

- LP Smart Panel siding with Limited 50 year warranty.
- Energy efficient vinyl windows with low-e coating.
- Porch light at all doors.
- 32" inswing rear door

## Cascadia Value Series Park Model Standard Features

### Plumbing, Electrical, Heating

- Pex hot and cold water lines.
- Heating system optional: 40,000 BTU propane ducted propane heater or electric wall heater(s)
- 20 gallon electric water heater.
- 50 amp main panel with "pigtail" cord.
- Black iron gas pipe run to front hitch end.
- R-11 fiberglass sidewall insulation.
- R-11 fiberglass/cellulose floor insulation
- R-11 cellulose blown ceiling insulation.

### Construction

- Full I-beam chassis construction
- Transverse 2" x 6" Floor Joists
- Woven simplex underbelly material
- 8' x 12' high density floor decking
- 2" x 4" sidewalls 16" O.C.
- Pre-engineered scissor trusses 16" O.C.
- 30 gauge steel strapping for truss to sidewall and floor to sidewall strength
- RPTIA approved
- ANSI approved