

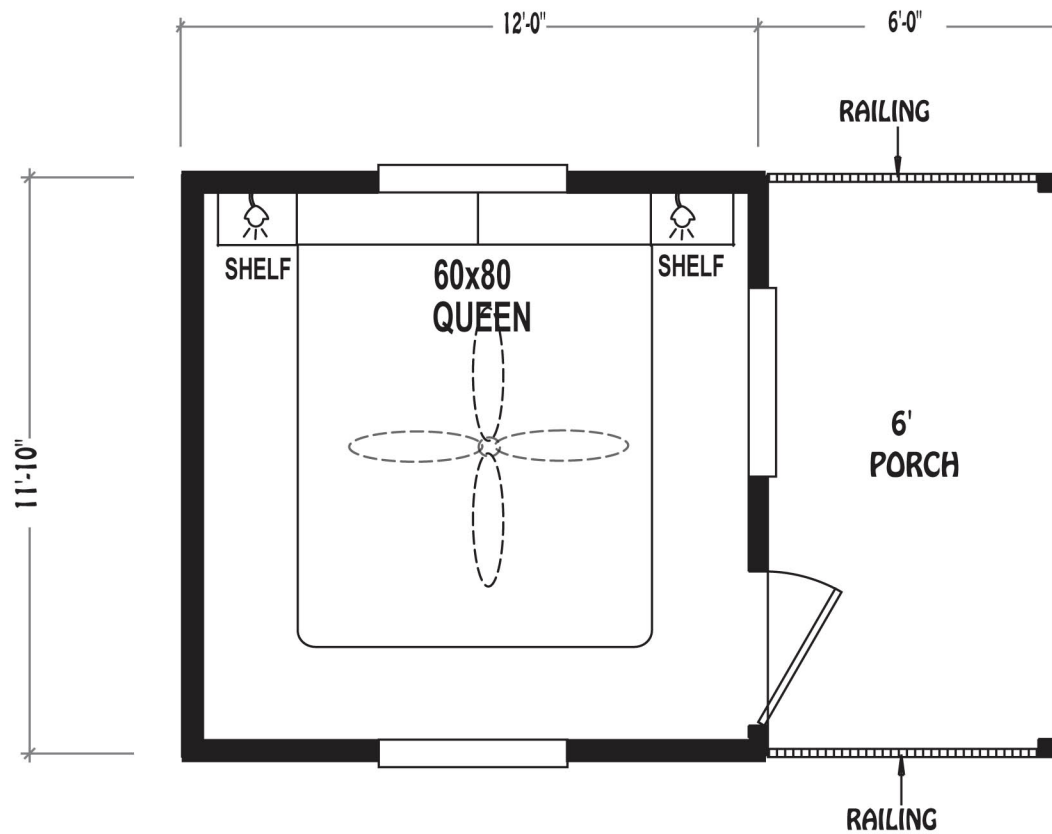
Cavco Bare Bones Cabins

Future Homes of Bremerton (360) 479-4663

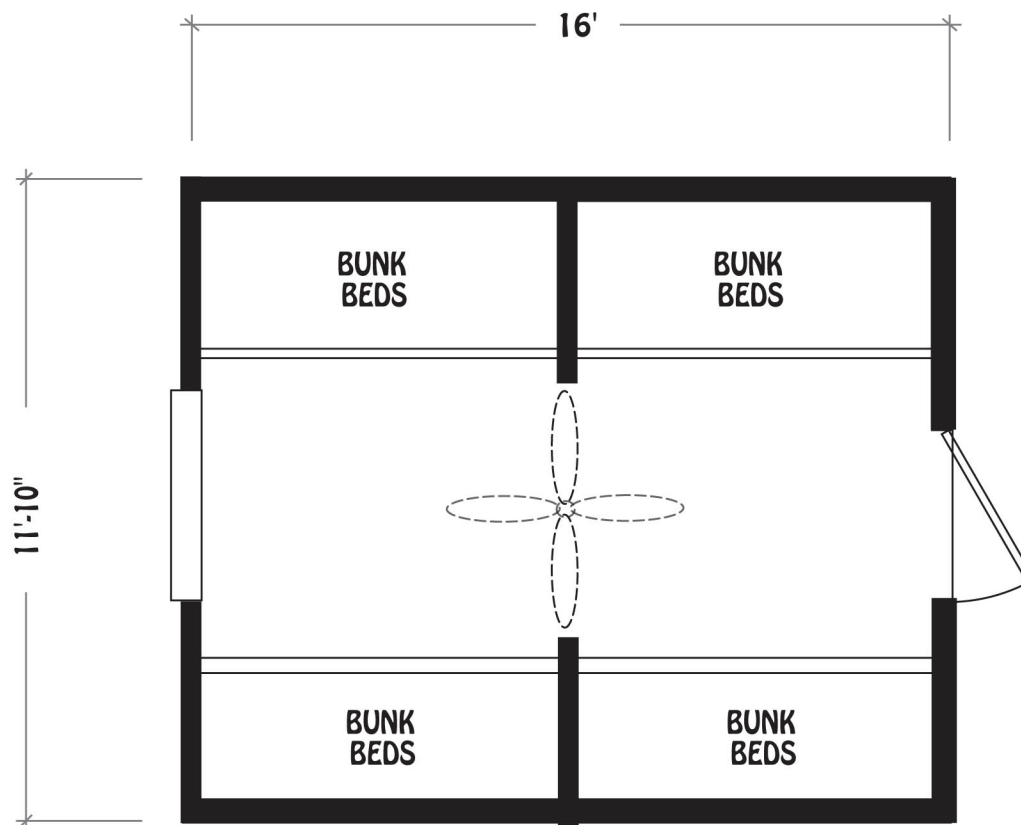


When kitchen and bath facilities are an unnecessary part of your camping experience, the Cavco Bare Bones line of camping cabins features affordable, rugged and climate efficient structures.

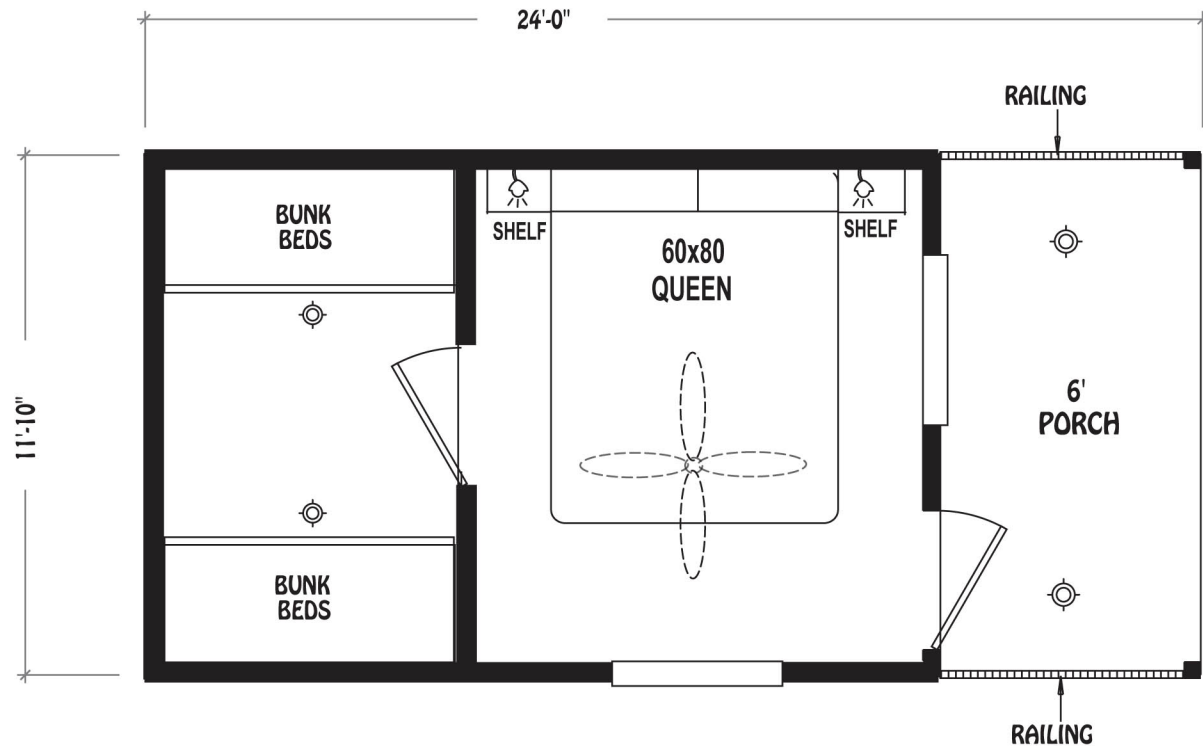
Four Floor Plans and Standard Features list below



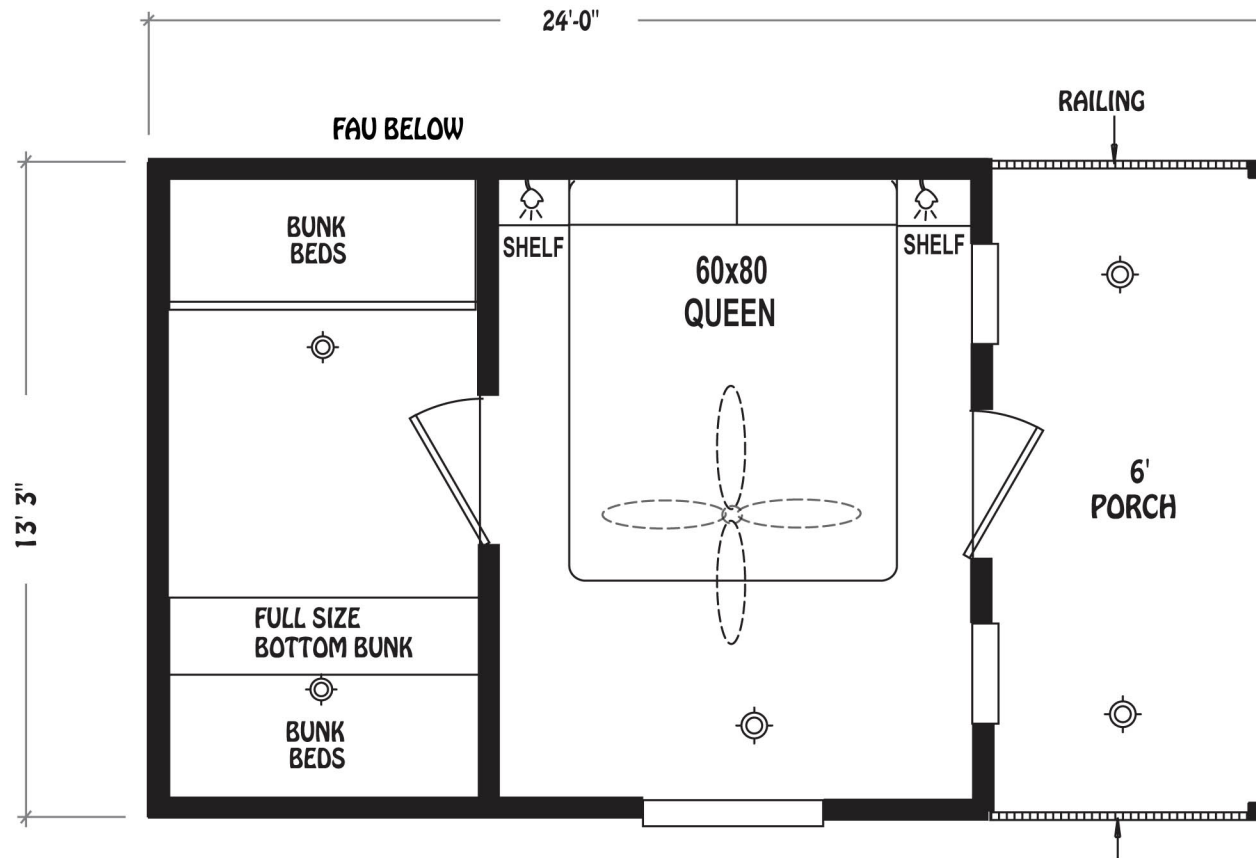
- | | | | | | |
|---------------|------------|----------------|----------|------------------|-------------|
| READING LIGHT | WALL LIGHT | PLANT SHELF | TV JACK | TOEKICK REGISTER | CEILING FAN |
| CHANDELIER | CAN LITES | GLD GLASS DOOR | PH PHONE | FLOOR REGISTER | SKYLITE |



- | | | | | | |
|---------------|------------|-------------|---------|------------------|-------------|
| READING LIGHT | WALL LIGHT | PLANT SHELF | TV JACK | TOEKICK REGISTER | CEILING FAN |
| CHANDELIER | CAN LITES | GLASS DOOR | PHONE | FLOOR REGISTER | SKYLITE |



- | | | | | | |
|---------------|------------|----------------|---------|------------------|-------------|
| READING LIGHT | WALL LIGHT | PLANT SHELF | TV JACK | TOEKICK REGISTER | CEILING FAN |
| CHANDELIER | CAN LITES | GLD GLASS DOOR | PHONE | FLOOR REGISTER | SKYLITE |



- | | | | | | |
|---------------|------------|-------------|---------|------------------|-------------|
| READING LIGHT | WALL LIGHT | PLANT SHELF | TV JACK | TOEKICK REGISTER | CEILING FAN |
| CHANDELIER | CAN LITES | GLASS DOOR | PHONE | FLOOR REGISTER | SKYLITE |

Barebones Cabins Standard Features

Future Home of Bremerton
360-479-4663

INTERIOR

- 1"x6" T&G clear sealed pine walls throughout
- 1/2" drywall taped, textured and painted ceilings
- Cathedral ceilings throughout
- Wood grain interior passage and pocket doors with heavy duty hardware
- 2" white faux mini blinds
- Woodgrain Congoleum Vinyl flooring throughout
- 1x sealed pine trim throughout
- Smoke detector
- Fire extinguisher
- LP Leak Gas Detector in units with propane
- Heavy steel welded and powder coated bunk railing (per floorplan)
- Heavy steel welded and powder coated bunk ladder (per floorplan)
- Vinyl cove base throughout
- Ceiling fan with light in main room
- Cable TV rough in on wall (per pla)
- 2-Bunk mattresses in bunk room (per floorplan)

EXTERIOR

- Colored metal roof
- Stained "Certainteed" lap exterior siding with OSB wood wrap and building wrap
- 2"x4" exterior trim around windows and corners
- Black exterior lights at each door
- Beige vinyl framed low "E" dual glaze windows throughout
- Front and rear overhangs
- Exterior GFI receptacle

PLUMBING, ELECTRICAL, HEATING & INSULATION

- PEX waterlines with low point drain
- Residential style U.L. approved electrical devices throughout
- 30 or 50 amp exterior main panel service with supply cord
- R-22 fiberglass floor insulation
- R-11 fiberglass sidewall insulation
- R-28 cellulose blown insulation (per roof pitch)
- Black iron gas pipe run to front hitch end
- GFI protection in bath and kitchen

CONSTRUCTION

- Full 8" I-beam chassis construction

Posted 8/1/11. Subject to change without notice.

Barebones Cabins Standard Features

- Transverse 2" x 6" #2 or better fir floor joists 16" O.C.
- Detachable hitch from main chassis
- Woven simplex underbelly material
- 2" x 4" sidewalls 16" O.C.
- 30 gauge steel strapping for truss to sidewall and floor to sidewall strength
- Composite decking on porch models (Per Floorplan)
- RPTIA approved
- ANSI approved

POPULAR OPTIONS

- Wall mount A/C unit
- 2',3' or 4' electric base board heaters with T-stat
- "RINNAI" Tankless waterheater
- "SHAW" laminate wood flooring
- Furniture Package