

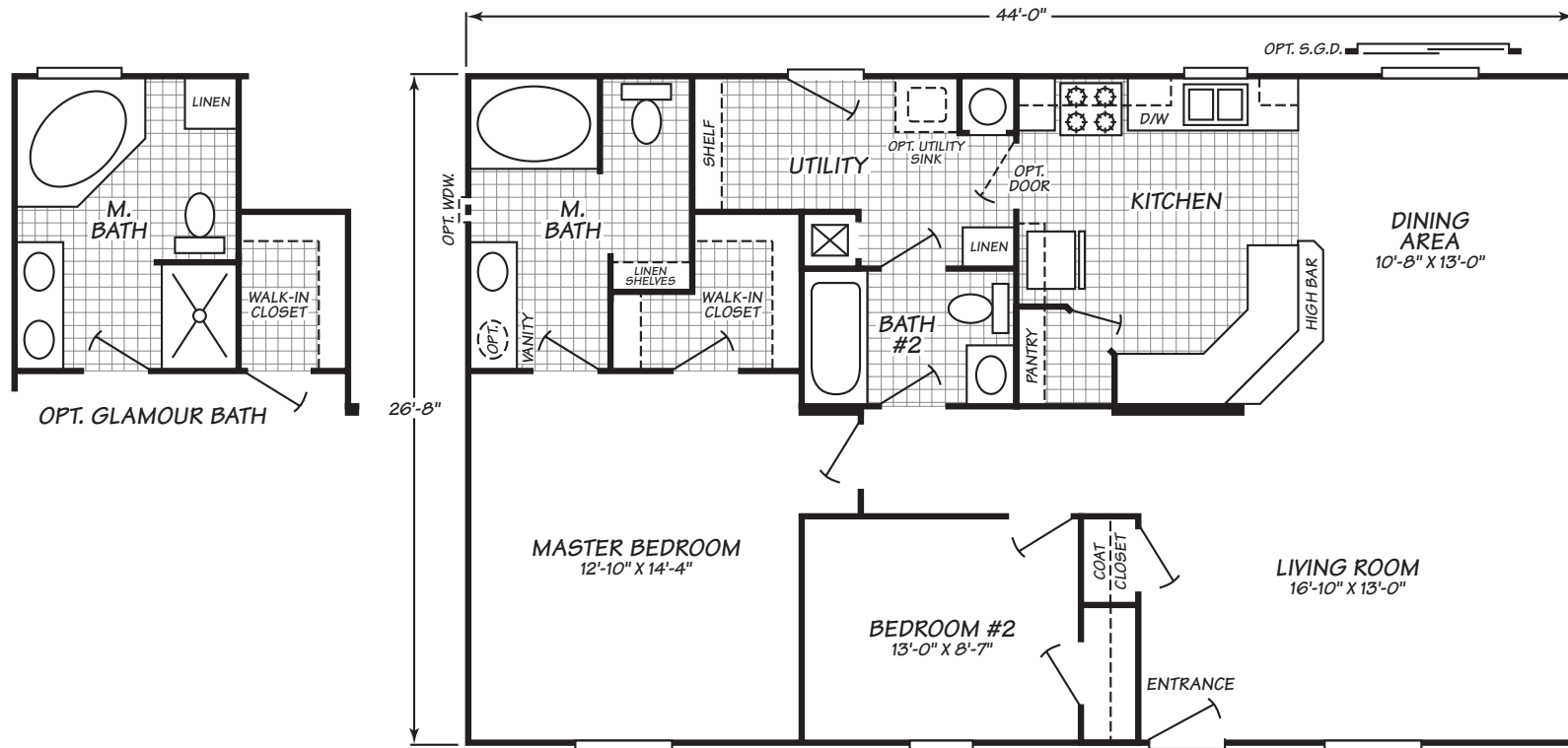
Fleetwood Double Section Tradition Home Floor Plans



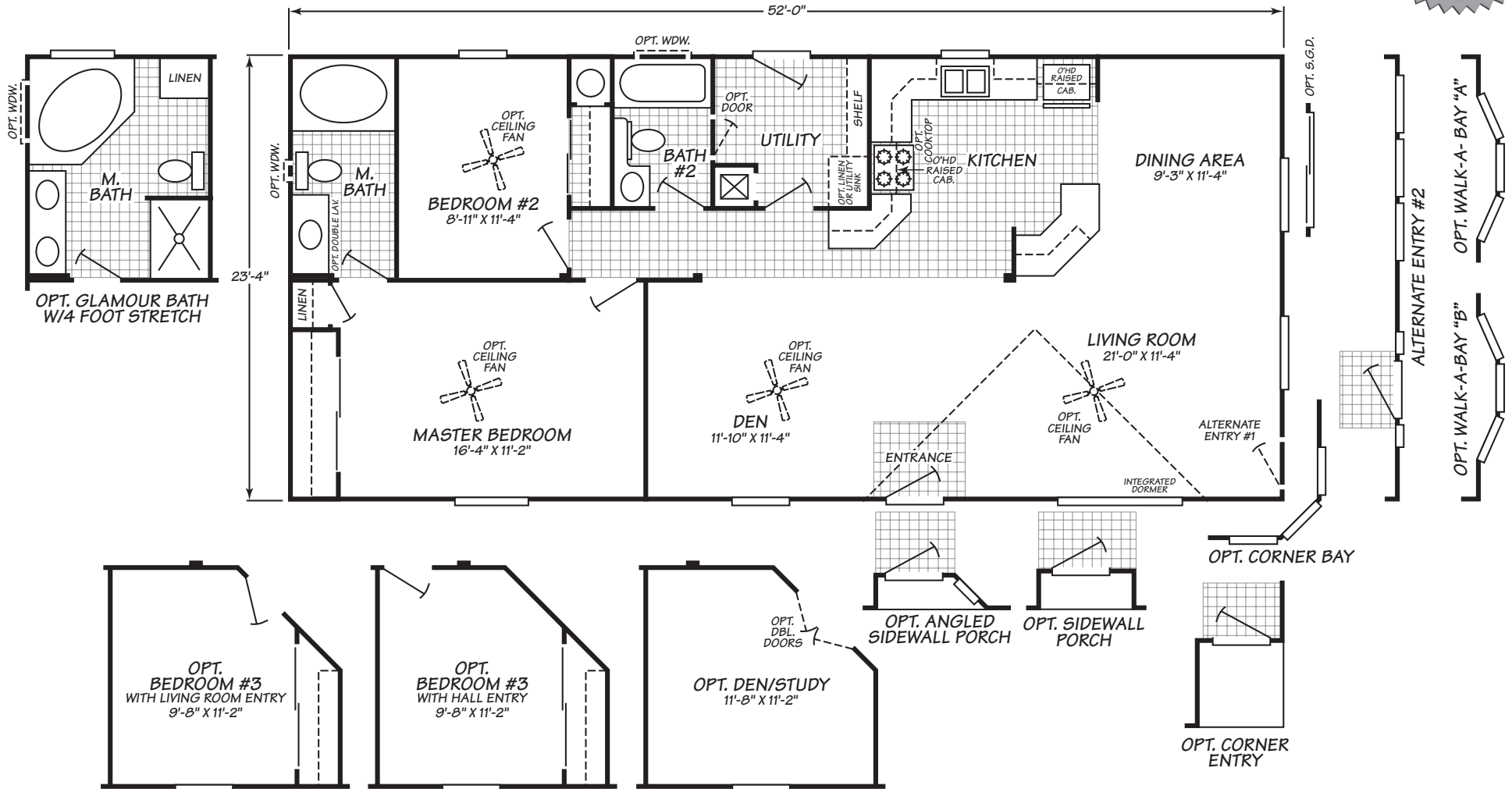
Tradition Series

Contents

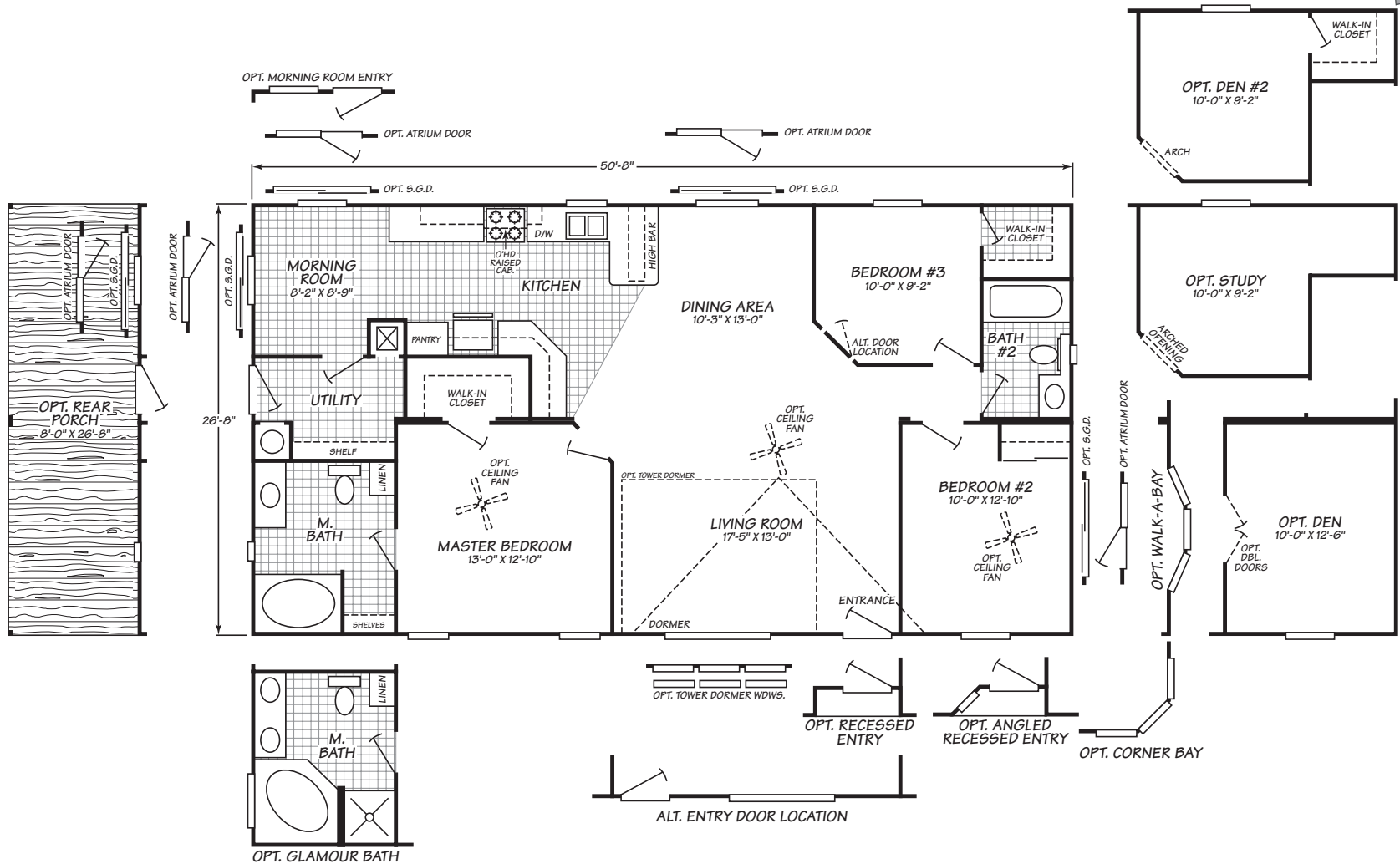
4442B	1173 Sq. Ft.	2 Bd/2 Ba	Pg 2
3522L	1213 Sq. Ft.	2 Bd/2 Ba	Pg 3
4513B	1350 Sq. Ft.	3 Bd/2 Ba	Pg 4
4523B	1386 Sq. Ft.	3 Bd/2 Ba	Pg 5
4523D	1386 Sq. Ft.	3 Bd/2 Ba	Pg 6
4563S	1492 Sq. Ft.	3 Bd/2 Ba	Pg 7
4603D	1552 Sq. Ft.	3 Bd/2 Ba	Pg 8
4604P	1599 Sq. ft.	4 Bd/2 Ba	Pg 9
4703Y	1613 Sq. Ft.	3 Bd/2 Ba	Pg 10
4663B	1759 Sq. Ft.	3 Bd/2 Ba	Pg 11
Tradition Series Specifications			Pg 12



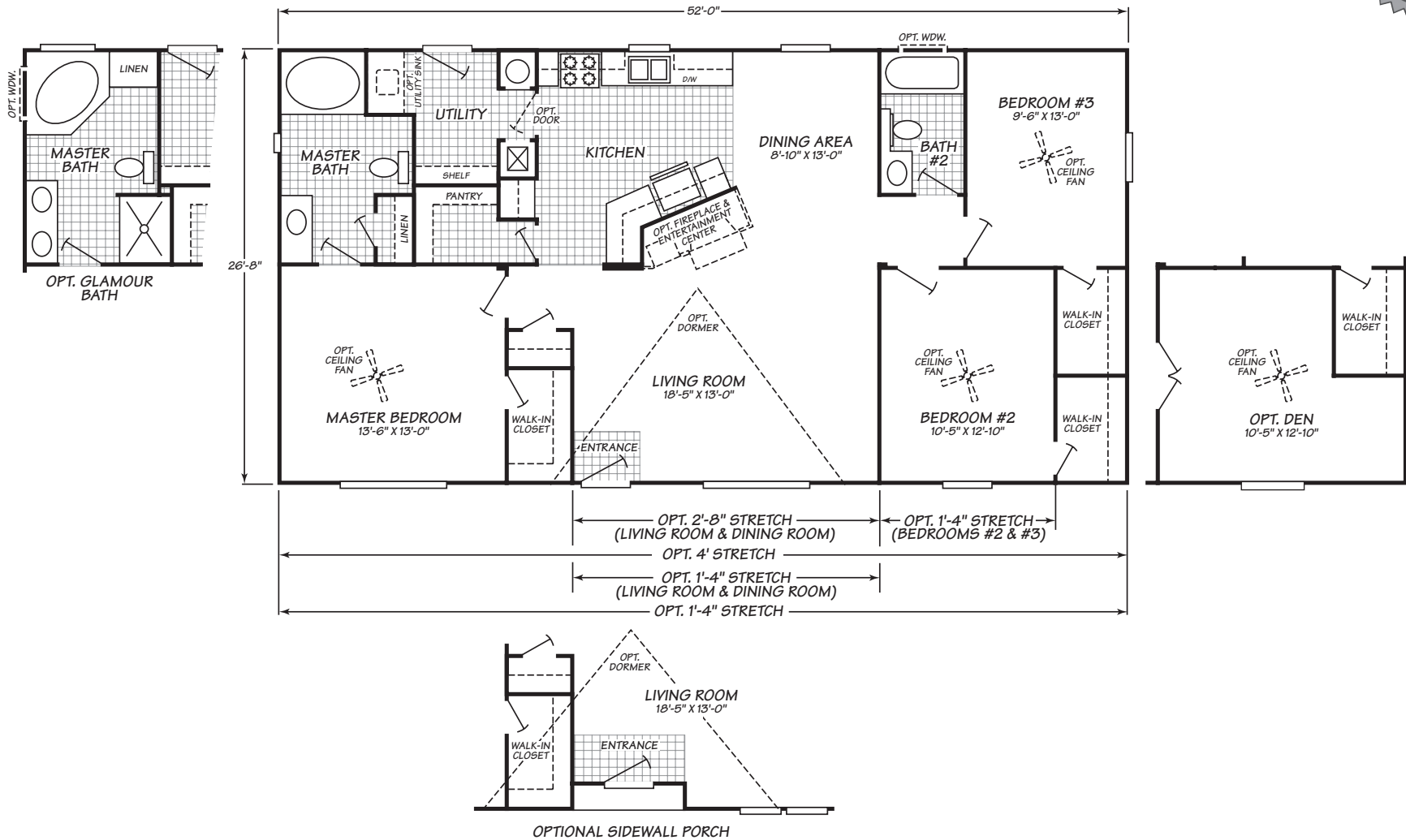
Fleetwood Homes reserves the right to change colors, prices, specifications, models, dimensions and materials without notice. Rendering and diagrams are meant to be representative and, in keeping with Fleetwood's policy of constant updating and improvement, may vary from the actual home. All dimensions are nominal and approximated. Square footage is measured from exterior wall to exterior wall, and is an approximate figure. Length indicated in floorplans is floor length only. The length of the hitch is not included. (Add four feet to arrive at transportable length.) Ask your retailer for specifics. PRICES AND SPECIFICATIONS SUBJECT TO CHANGE WITHOUT NOTICE OR OBLIGATION.



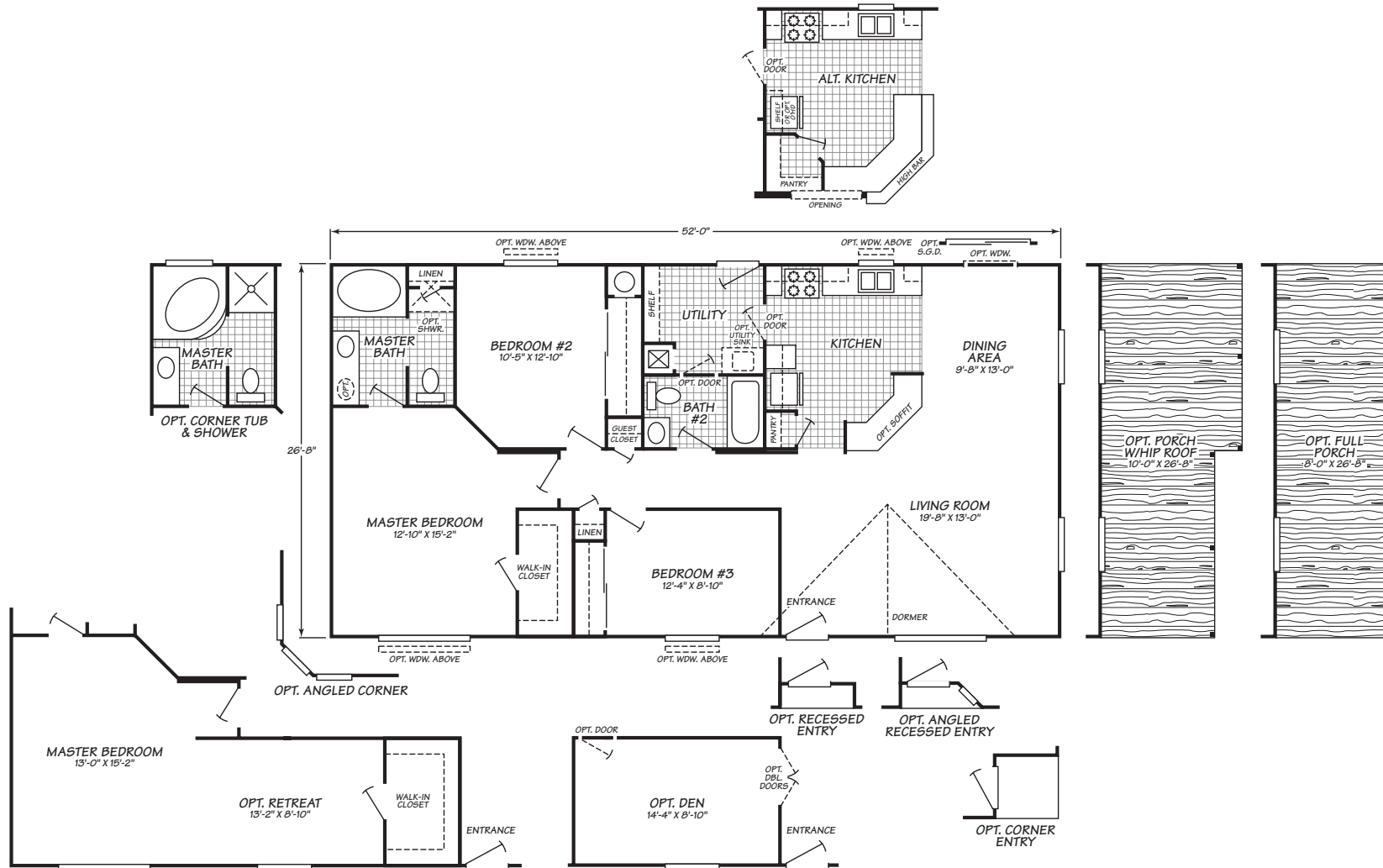
Fleetwood Homes reserves the right to change colors, prices, specifications, models, dimensions and materials without notice. Rendering and diagrams are meant to be representative and, in keeping with Fleetwood's policy of constant updating and improvement, may vary from the actual home. All dimensions are nominal and approximated. Square footage is measured from exterior wall to exterior wall, and is an approximate figure. Length indicated in floorplans is floor length only. The length of the hitch is not included. (Add four feet to arrive at transportable length.) Ask your retailer for specifics. PRICES AND SPECIFICATIONS SUBJECT TO CHANGE WITHOUT NOTICE OR OBLIGATION.



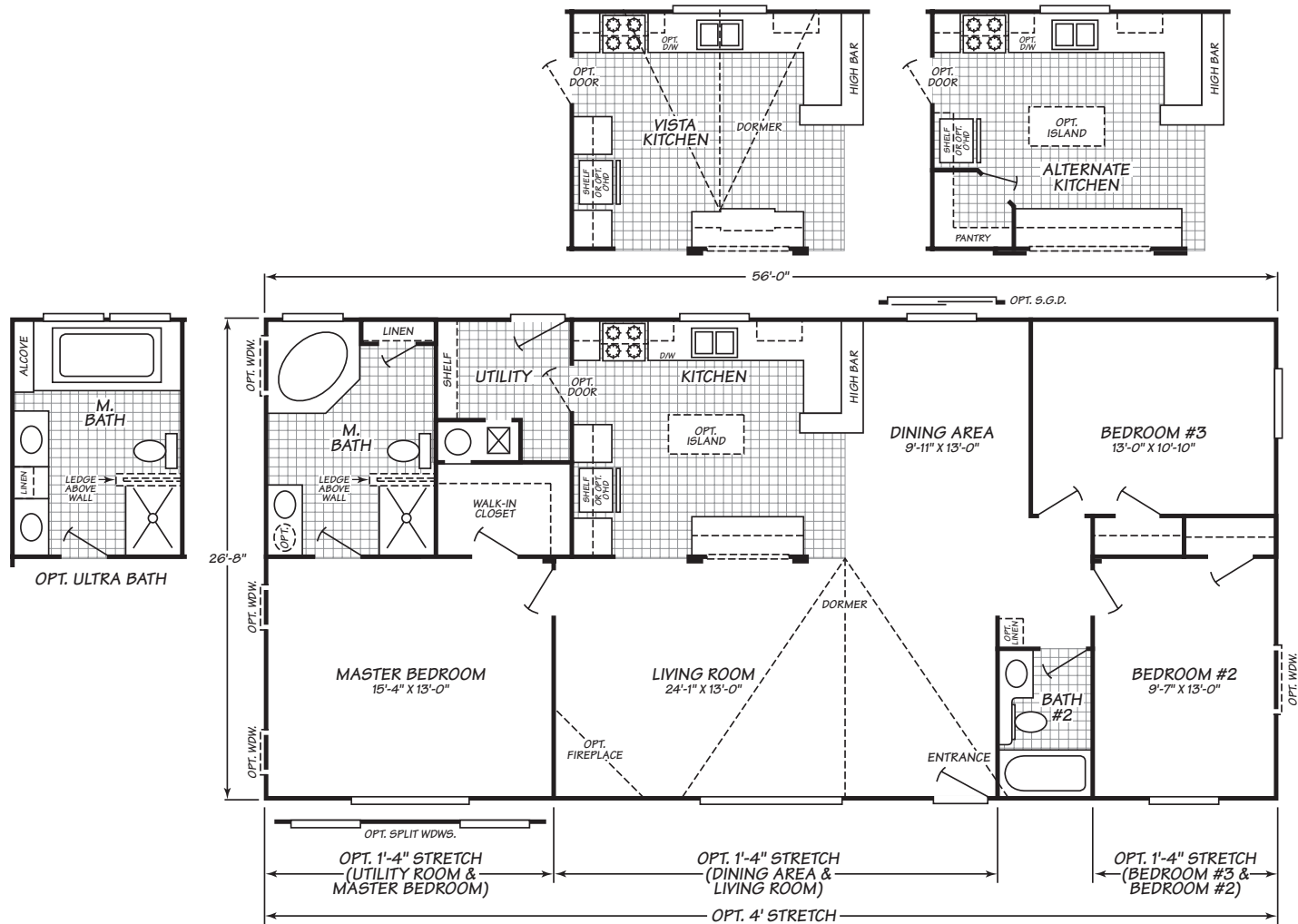
Fleetwood Homes reserves the right to change colors, prices, specifications, models, dimensions and materials without notice. Rendering and diagrams are meant to be representative and, in keeping with Fleetwood's policy of constant updating and improvement, may vary from the actual home. All dimensions are nominal and approximated. Square footage is measured from exterior wall to exterior wall, and is an approximate figure. Length indicated in floorplans is floor length only. The length of the hitch is not included. (Add four feet to arrive at transportable length.) Ask your retailer for specifics. PRICES AND SPECIFICATIONS SUBJECT TO CHANGE WITHOUT NOTICE OR OBLIGATION.



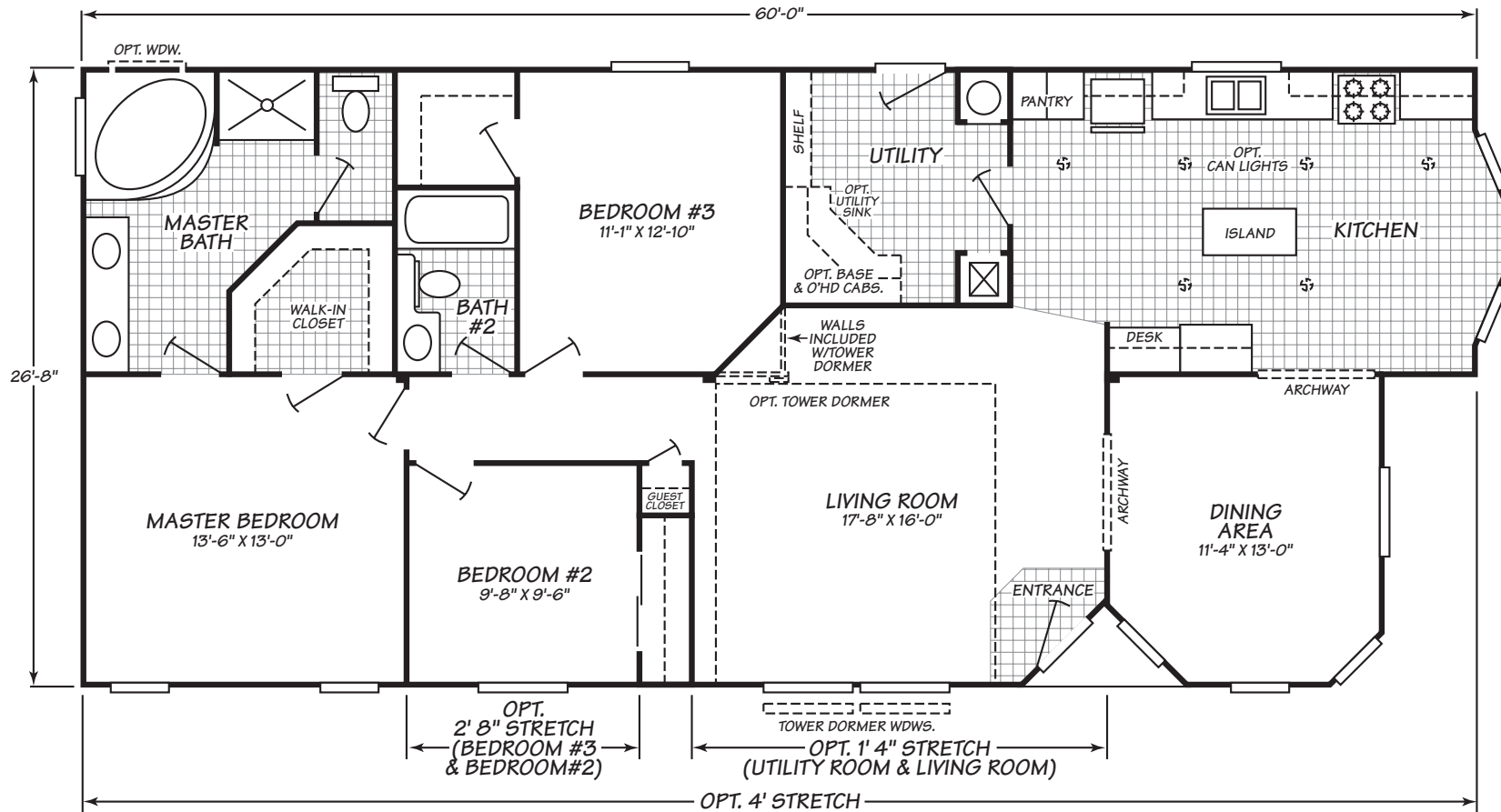
Fleetwood Homes reserves the right to change colors, prices, specifications, models, dimensions and materials without notice. Rendering and diagrams are meant to be representative and, in keeping with Fleetwood's policy of constant updating and improvement, may vary from the actual home. All dimensions are nominal and approximated. Square footage is measured from exterior wall to exterior wall, and is an approximate figure. Length indicated in floorplans is floor length only. The length of the hitch is not included. (Add four feet to arrive at transportable length.) Ask your retailer for specifics. PRICES AND SPECIFICATIONS SUBJECT TO CHANGE WITHOUT NOTICE OR OBLIGATION.



Fleetwood Homes reserves the right to change colors, prices, specifications, models, dimensions and materials without notice. Rendering and diagrams are meant to be representative and, in keeping with Fleetwood's policy of constant updating and improvement, may vary from the actual home. All dimensions are nominal and approximated. Square footage is measured from exterior wall to exterior wall, and is an approximate figure. Length indicated in floorplans is floor length only. The length of the hitch is not included. (Add four feet to arrive at transportable length.) Ask your retailer for specifics. PRICES AND SPECIFICATIONS SUBJECT TO CHANGE WITHOUT NOTICE OR OBLIGATION.



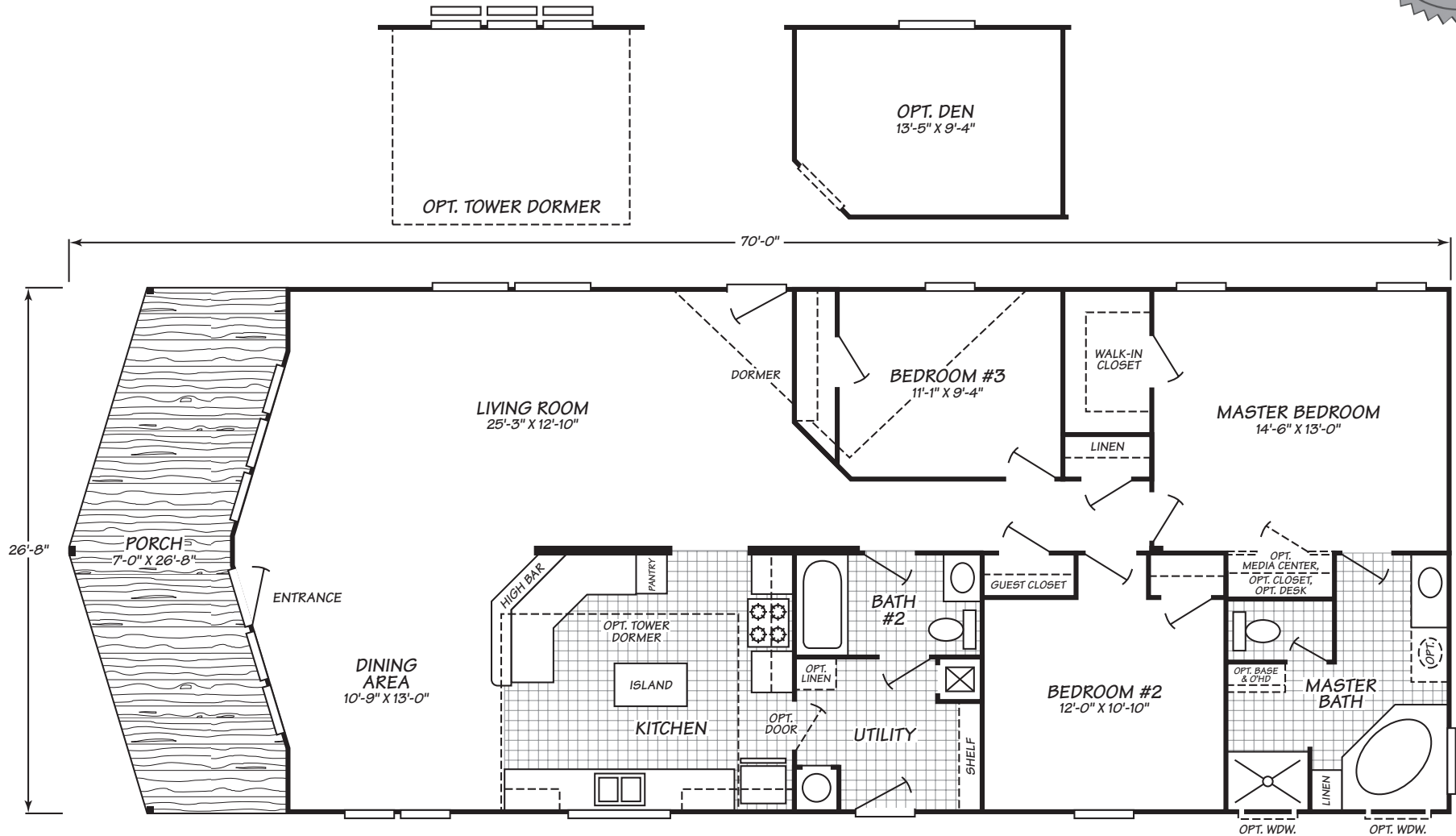
Fleetwood Homes reserves the right to change colors, prices, specifications, models, dimensions and materials without notice. Rendering and diagrams are meant to be representative and, in keeping with Fleetwood's policy of constant updating and improvement, may vary from the actual home. All dimensions are nominal and approximated. Square footage is measured from exterior wall to exterior wall, and is an approximate figure. Length indicated in floorplans is floor length only. The length of the hitch is not included. (Add four feet to arrive at transportable length.) Ask your retailer for specifics. PRICES AND SPECIFICATIONS SUBJECT TO CHANGE WITHOUT NOTICE OR OBLIGATION.



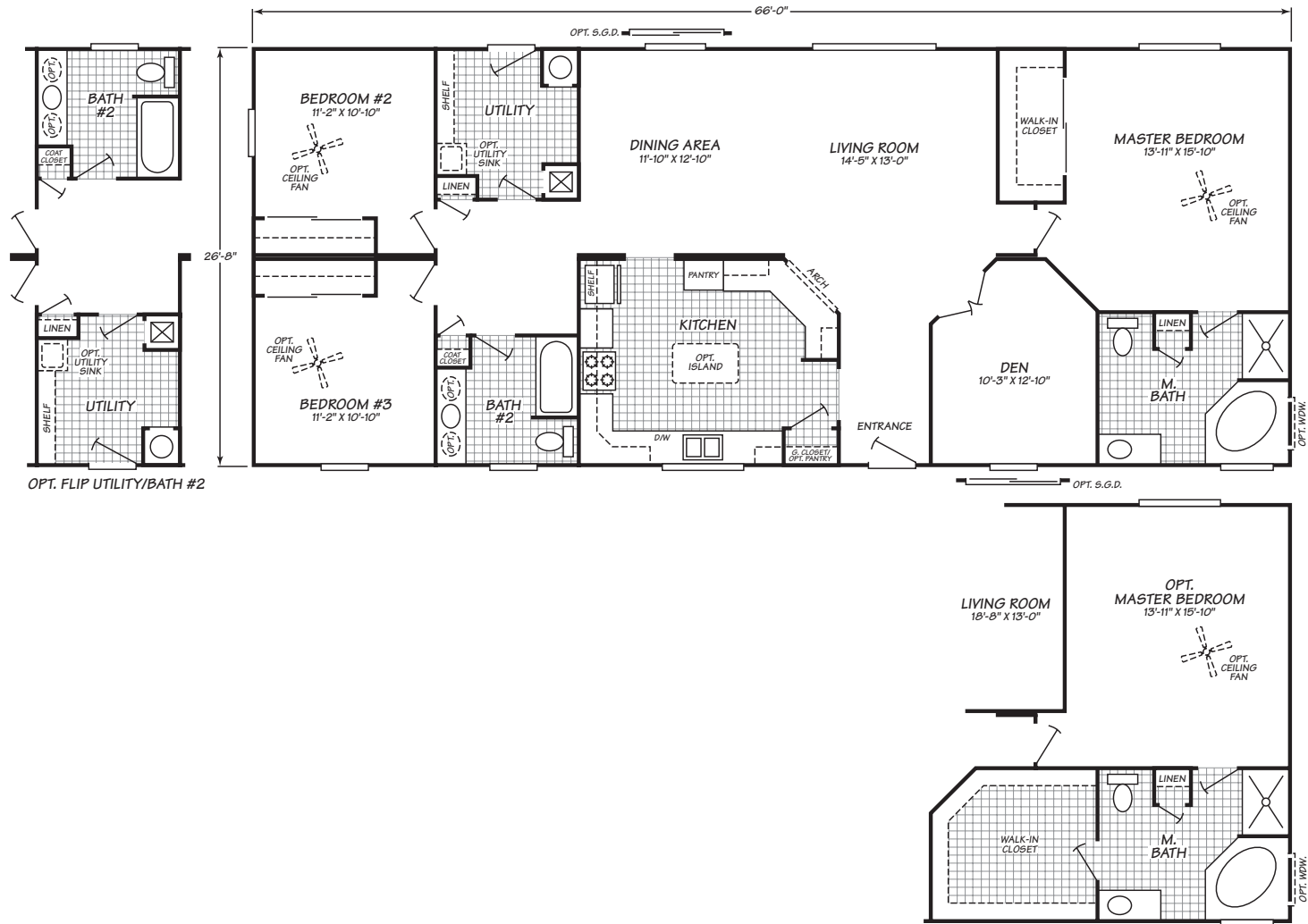
Fleetwood Homes reserves the right to change colors, prices, specifications, models, dimensions and materials without notice. Rendering and diagrams are meant to be representative and, in keeping with Fleetwood's policy of constant updating and improvement, may vary from the actual home. All dimensions are nominal and approximated. Square footage is measured from exterior wall to exterior wall, and is an approximate figure. Length indicated in floorplans is floor length only. The length of the hitch is not included. (Add four feet to arrive at transportable length.) Ask your retailer for specifics. PRICES AND SPECIFICATIONS SUBJECT TO CHANGE WITHOUT NOTICE OR OBLIGATION.



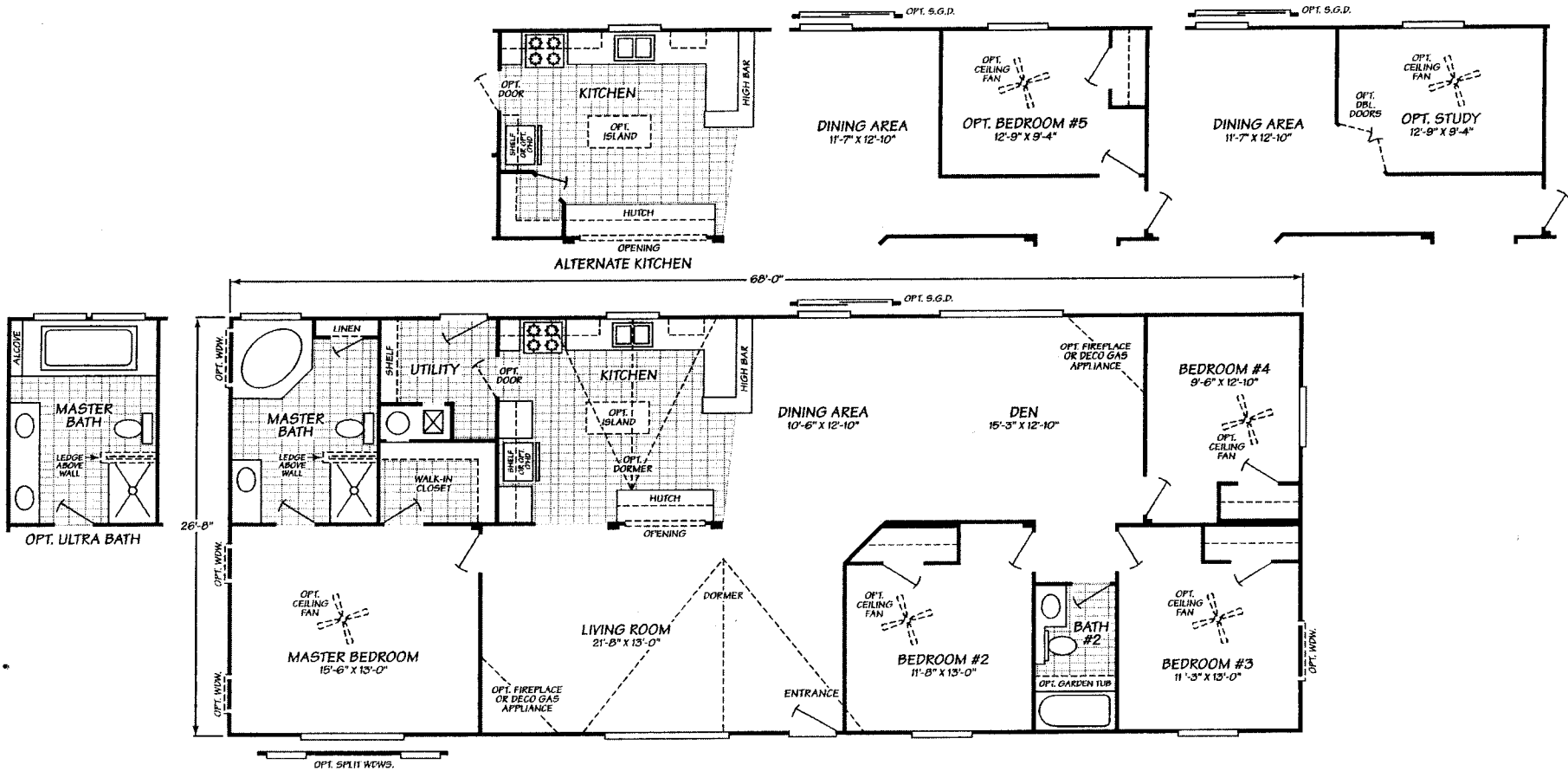
Fleetwood Homes reserves the right to change colors, prices, specifications, models, dimensions and materials without notice. Rendering and diagrams are meant to be representative and, in keeping with Fleetwood's policy of constant updating and improvement, may vary from the actual home. All dimensions are nominal and approximated. Square footage is measured from exterior wall to exterior wall, and is an approximate figure. Length indicated in floorplans is floor length only. The length of the hitch is not included. (Add four feet to arrive at transportable length.) Ask your retailer for specifics. PRICES AND SPECIFICATIONS SUBJECT TO CHANGE WITHOUT NOTICE OR OBLIGATION.



Fleetwood Homes reserves the right to change colors, prices, specifications, models, dimensions and materials without notice. Rendering and diagrams are meant to be representative and, in keeping with Fleetwood's policy of constant updating and improvement, may vary from the actual home. All dimensions are nominal and approximated. Square footage is measured from exterior wall to exterior wall, and is an approximate figure. Length indicated in floorplans is floor length only. The length of the hitch is not included. (Add four feet to arrive at transportable length.) Ask your retailer for specifics. PRICES AND SPECIFICATIONS SUBJECT TO CHANGE WITHOUT NOTICE OR OBLIGATION.



Fleetwood Homes reserves the right to change colors, prices, specifications, models, dimensions and materials without notice. Rendering and diagrams are meant to be representative and, in keeping with Fleetwood's policy of constant updating and improvement, may vary from the actual home. All dimensions are nominal and approximated. Square footage is measured from exterior wall to exterior wall, and is an approximate figure. Length indicated in floorplans is floor length only. The length of the hitch is not included. (Add four feet to arrive at transportable length.) Ask your retailer for specifics. PRICES AND SPECIFICATIONS SUBJECT TO CHANGE WITHOUT NOTICE OR OBLIGATION.



Fleetwood Homes reserves the right to change colors, prices, specifications, models, dimensions and materials without notice. Rendering and diagrams are meant to be representative and, in keeping with Fleetwood's policy of constant updating and improvement, may vary from the actual home. All dimensions are nominal and approximated. Square footage is measured from exterior wall to exterior wall, and is an approximate figure. Length indicated in floorplans is floor length only. The length of the hitch is not included. (Add four feet to arrive at transportable length.) Ask your retailer for specifics. PRICES AND SPECIFICATIONS SUBJECT TO CHANGE WITHOUT NOTICE OR OBLIGATION.

Interior

Tape & Texture with Painted Walls Finished, textured drywall enhances home appearance

Dining Room Chandelier Add a dramatic lighting detail with an elegant chandelier

Generously Sized Windows Provide natural light in your home

Cathedral Ceilings Throughout your home provide a feeling of spaciousness

Mini Blinds Stylish blinds provide total privacy and protect carpets from fading

Walk-in Closet Large, well-lit clothing storage closet has space for entire wardrobe (selected models-see floor plans)

Vinyl Tile Entry Way Easy to care for, durable vinyl stands up to wear in this high traffic area and protects carpets

100% Nylon Carpet Stylish, durable and easy to clean

Rounded Sheet Rock Corners (Most Outside Corners) in Living Areas Softens the decor in the home providing a contemporary atmosphere

Hidden Cabinet Door Hinges Concealed hinges create a clean, uncluttered look for cabinets

Exterior

Smart Side Exterior Siding OSB siding by LP features a 50 year limited warranty for peace of mind

2X6" Exterior Wall Frames, 16" on Center Additional structural strength while providing an increased R value of R21 (option on single section homes)

Low-E Coated, Dual Paned, Vinyl Framed Windows Provides better energy efficiency

Exterior Dormers Greatly enhance the exterior of the home

Vented Roof Cavity Allows hot air and condensation to exhaust for improved energy efficiency

2X6" Floor Joists on 16" Centers Provides a stable foundation throughout the home

Transverse Floor Construction True basement style floor system features full width lumber and fully supported decking

3/12 Roof Pitch Greater pitch creates a custom residential home appearance

Class "A" Fire-Rated Shingle Roof Provides long lasting, low maintenance performance

25 Year Shingle Roofing System Provides excellent look and outstanding protection from the elements

Bath

One-piece fiberglass bathtub and shower combination Durable, attractive, and easy to clean- guest bath

Towel Bar & Tissue Holders Ready to move in with the convenience of towel and tissue placements

China Sinks with Overflow Offers elegant look and eliminates water spills

Oversize Tub with Shower in Master Bath Perfect for comfortable soaking or a refreshing shower

Hollywood light fixture above vanity Flattering light source illuminates vanity mirror

Single Lever Faucets Refined single lever faucet fixtures are attractive and easier to use

Easy-Care Laminate Counter Tops with Hand Laid, 4" Ceramic Tile Backsplash Provides outstanding durability and attractive color accent

Bank of Drawers in Master Bathroom Offers practical, handy storage

Kitchen

Raised Panel Hardwood Cabinet Doors Long-lasting and beautiful, enriches the appearance of kitchen cabinets

Dishwasher Save time washing dishes with a quality, brand name appliance

30" Overhead Cabinets Convenient, accessible storage with lined adjustable shelves for kitchen equipment & supplies

Kitchen Cabinet Crown Molding Generous crown moldings enhance cabinets

Black Appliances Whirlpool® appliances in a stylish, contemporary finish

18 Cubic Foot Frost Free Refrigerator By Whirlpool provides ample storage from a brand you trust

Adjustable Overhead Cabinet Shelves Maximizes storage options

Drawers Over Doors Construction Efficient design enhances storage and keeps utensils close at hand

Stainless Steel Kitchen Sink Durable, stain resistant sink is chip proof with easy to use lever faucet

Choice Selection of 4" Ceramic Tile Backsplash Provides attractive color accent

Utilities, Safety & Energy

200 Amp Electrical Panel Box Designed and installed for safety, easy access and ample household capacity

Dual Pane Vinyl Windows Easy to clean, low maintenance, and helps to lower power bills

Full-size furnace doors Improves access to furnace and adds to custom home appearance

Utility Shut-Offs Quickly shut off water and gas for repairs or in an emergency

Electric Furnace Provides comfort and efficiency

Plumbed and Wired For Washer and Dryer Provides convenient hookup

Basement Style One-Piece Heat Duct Reduces heat loss and save on energy costs

Name Brand Vent System Fan Reduces condensation in home

Options

Energy Star Insulation Package Energy Star maximizes heating, cooling, and poer savings through energy efficiency

40 Lb, 60 Lb. and 80 Lb. Roof Load Provides increased strength

Skylights Provides additional lighting and a designer look in the kitchen (per plan)

Laminate Flooring Upgrade Tough, long-wearing laminate flooring available in appealing designer colors

Deluxe Carpet Upgrade Luxurious, heavier weight carpet in designer colors

Origami Ceiling with Customized Windows Creates a spacious feel and fills the room with natural light

Tower Dormer with Stair Stepped Ceiling and Extra Window Height Creates an elegant living area with additional natural light

Deluxe Carpet Upgrade Luxurious, heavier weight carpet in designer colors

Interior

Tape & Texture with Painted Walls Finished, textured drywall enhances home appearance

Dining Room Chandelier Add a dramatic lighting detail with an elegant chandelier

Generously Sized Windows Provide natural light in your home

Cathedral Ceilings Throughout your home provide a feeling of spaciousness

Mini Blinds Stylish blinds provide total privacy and protect carpets from fading

Walk-in Closet Large, well-lit clothing storage closet has space for entire wardrobe (selected models-see floor plans)

Vinyl Tile Entry Way Easy to care for, durable vinyl stands up to wear in this high traffic area and protects carpets

100% Nylon Carpet Stylish, durable and easy to clean

Rounded Sheet Rock Corners (Most Outside Corners) in Living Areas Softens the decor in the home providing a contemporary atmosphere

Hidden Cabinet Door Hinges Concealed hinges create a clean, uncluttered look for cabinets

Exterior

Smart Side Exterior Siding OSB siding by LP features a 50 year limited warranty for peace of mind

2X6" Exterior Wall Frames, 16" on Center Additional structural strength while providing an increased R value of R21 (option on single section homes)

Low-E Coated, Dual Paned, Vinyl Framed Windows Provides better energy efficiency

Exterior Dormers Greatly enhance the exterior of the home

Vented Roof Cavity Allows hot air and condensation to exhaust for improved energy efficiency

2X6" Floor Joists on 16" Centers Provides a stable foundation throughout the home

Transverse Floor Construction True basement style floor system features full width lumber and fully supported decking

3/12 Roof Pitch Greater pitch creates a custom residential home appearance

Class "A" Fire-Rated Shingle Roof Provides long lasting, low maintenance performance

25 Year Shingle Roofing System Provides excellent look and outstanding protection from the elements

Bath

One-piece fiberglass bathtub and shower combination Durable, attractive, and easy to clean- guest bath

Towel Bar & Tissue Holders Ready to move in with the convenience of towel and tissue placements

China Sinks with Overflow Offers elegant look and eliminates water spills

Oversize Tub with Shower in Master Bath Perfect for comfortable soaking or a refreshing shower

Hollywood light fixture above vanity Flattering light source illuminates vanity mirror

Single Lever Faucets Refined single lever faucet fixtures are attractive and easier to use

Easy-Care Laminate Counter Tops with Hand Laid, 4" Ceramic Tile Backsplash Provides outstanding durability and attractive color accent

Bank of Drawers in Master Bathroom Offers practical, handy storage

Kitchen

Raised Panel Hardwood Cabinet Doors Long-lasting and beautiful, enriches the appearance of kitchen cabinets

Dishwasher Save time washing dishes with a quality, brand name appliance

30" Overhead Cabinets Convenient, accessible storage with lined adjustable shelves for kitchen equipment & supplies

Kitchen Cabinet Crown Molding Generous crown moldings enhance cabinets

Black Appliances Whirlpool® appliances in a stylish, contemporary finish

18 Cubic Foot Frost Free Refrigerator By Whirlpool provides ample storage from a brand you trust

Adjustable Overhead Cabinet Shelves Maximizes storage options

Drawers Over Doors Construction Efficient design enhances storage and keeps utensils close at hand

Stainless Steel Kitchen Sink Durable, stain resistant sink is chip proof with easy to use lever faucet

Choice Selection of 4" Ceramic Tile Backsplash Provides attractive color accent

Utilities, Safety & Energy

200 Amp Electrical Panel Box Designed and installed for safety, easy access and ample household capacity

Dual Pane Vinyl Windows Easy to clean, low maintenance, and helps to lower power bills

Full-size furnace doors Improves access to furnace and adds to custom home appearance

Utility Shut-Offs Quickly shut off water and gas for repairs or in an emergency

Electric Furnace Provides comfort and efficiency

Plumbed and Wired For Washer and Dryer Provides convenient hookup

Basement Style One-Piece Heat Duct Reduces heat loss and save on energy costs

Name Brand Vent System Fan Reduces condensation in home

Options

Energy Star Insulation Package Energy Star maximizes heating, cooling, and poer savings through energy efficiency

40 Lb, 60 Lb. and 80 Lb. Roof Load Provides increased strength

Skylights Provides additional lighting and a designer look in the kitchen (per plan)

Laminate Flooring Upgrade Tough, long-wearing laminate flooring available in appealing designer colors

Deluxe Carpet Upgrade Luxurious, heavier weight carpet in designer colors

Origami Ceiling with Customized Windows Creates a spacious feel and fills the room with natural light

Tower Dormer with Stair Stepped Ceiling and Extra Window Height Creates an elegant living area with additional natural light

Deluxe Carpet Upgrade Luxurious, heavier weight carpet in designer colors